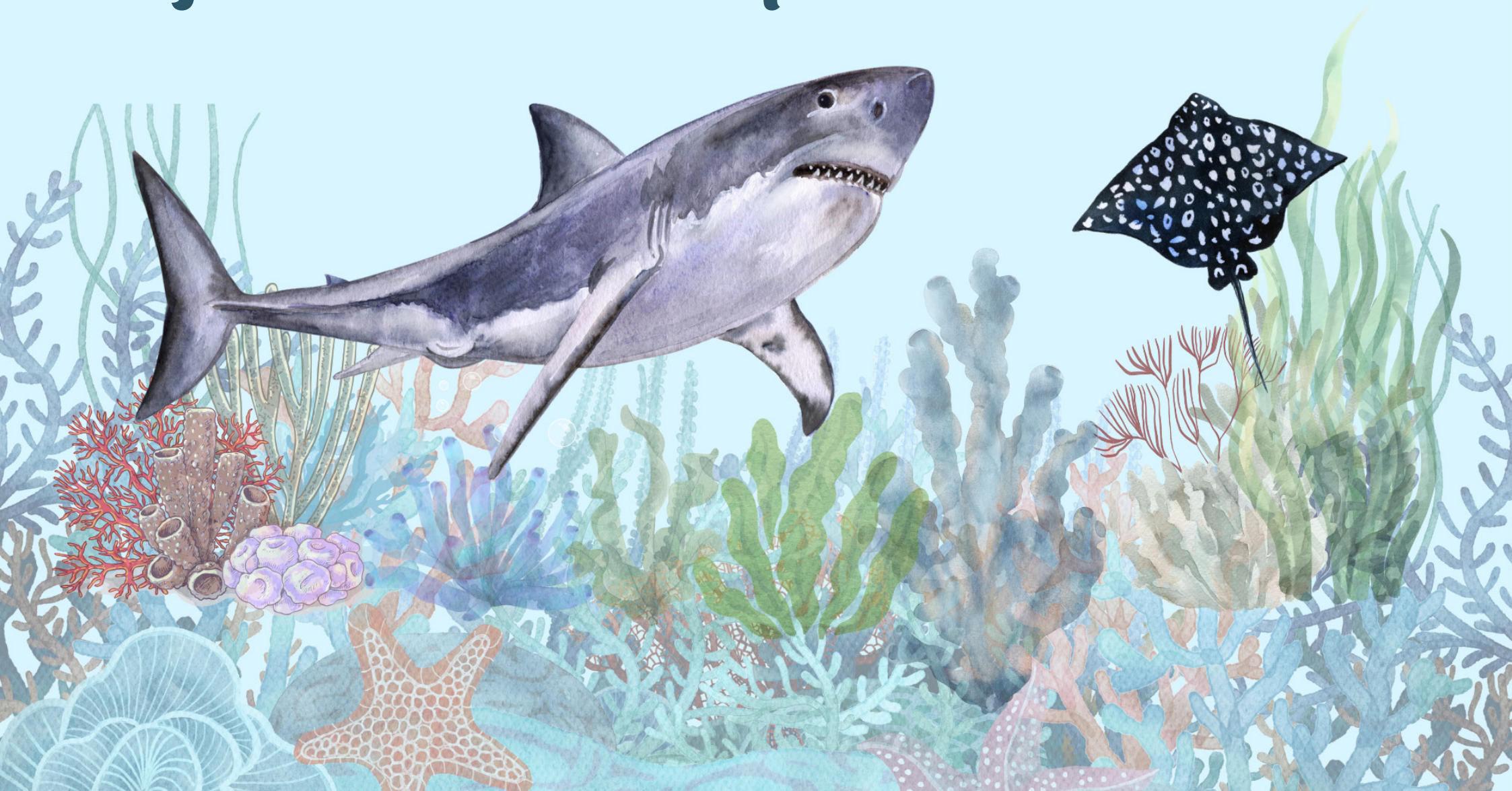


Sharks and Rays of Lakshadweep



© 2024 by Dakshin Foundation

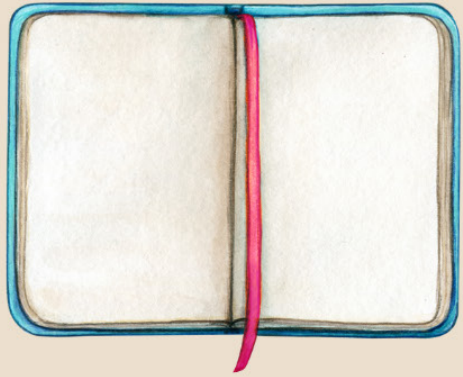
Produced by Marine Flagships Programme

Concept and Content: Hariprasath Ramesh and
Mohammed Serfas Khan

Design: Barkhaa Avinash and
Debangini Ray

Programme Head: Kartik Shanker





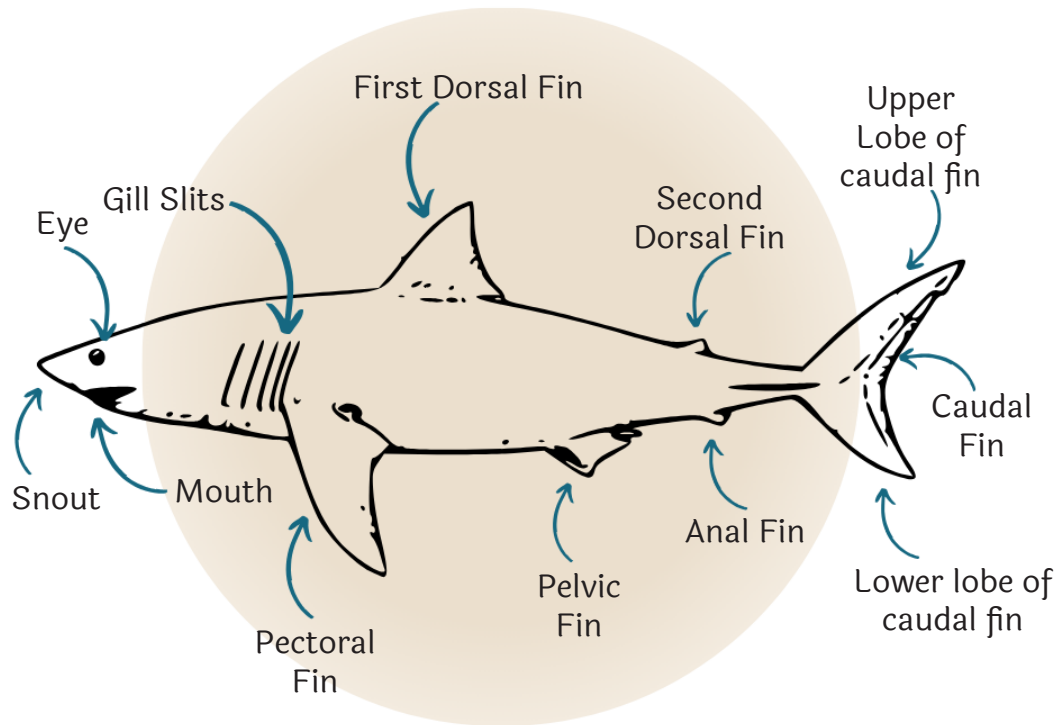
Field Guide



Sharks and Rays

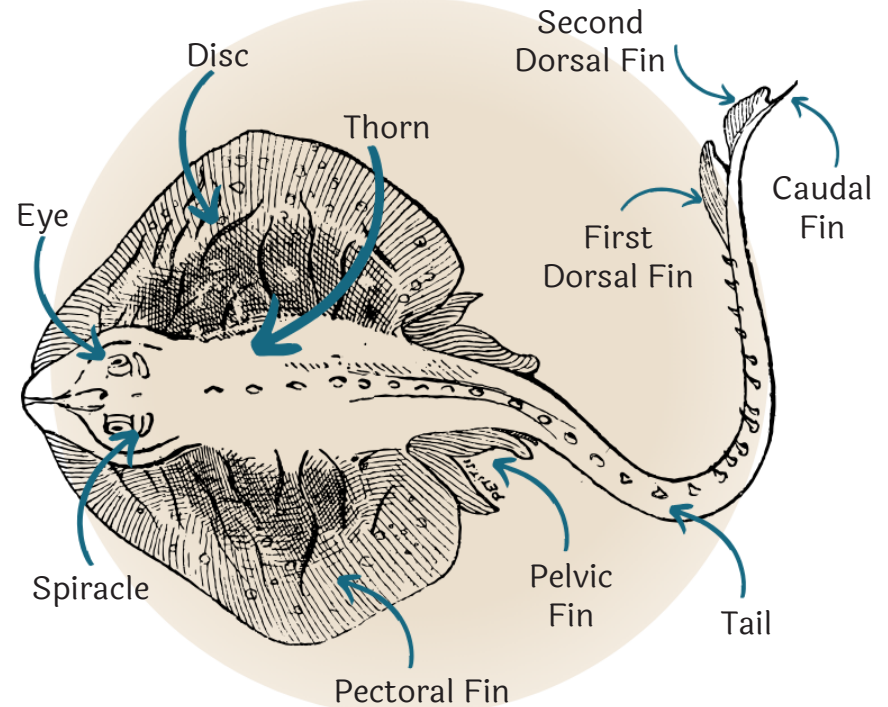
Sharks and rays are fishes with cartilaginous skeletons. These charismatic animals inhabit diverse habitats from coastal shallow waters to the deepest zones of the oceans. They are found globally in both tropic and temperate waters. They are predators that occupy the top levels of a food web and structure marine communities through predation and fear. Both sharks and rays have filter-feeding species that feed on plankton and small fishes.

Sharks



Sharks have a laterally compressed, cylindrical, and streamlined body form and are adapted to thrive in both the open ocean and the ocean floor. Most sharks are generalist predators and consume anything smaller than them. They range in size from 20 cm to 17 m.

Rays







Rays are dorso-ventrally flattened and are adapted to live on the sea floor. They have crushing teeth adapted to hunt hard-shelled fauna such as crustaceans, mollusks, and other invertebrates that live on or below the sea floor. They range in size from 50cm to 9m.

Table of Contents




Sharks and Rays	I - II	Nurse shark.....	9
Key	III	Zebra shark.....	10
Shark and Ray Habitat	IV	Tawny nurse shark.....	10
Sharks		Hooktooth shark.....	11
Whale shark.....	1	Milk shark.....	11
Smooth hammerhead shark.....	1	Scalloped hammerhead shark.....	12
Oceanic whitetip shark.....	2	Bramble shark.....	12
Winghead shark.....	2	Rays	
Tiger shark.....	3	Ocellated eagle ray.....	13
Blacktail reef shark.....	3	Bengal whipray.....	13
Blacktail reef shark.....	4	Honeycomb stingray.....	14
Silky shark.....	4	Giant manta ray.....	14
Blacktip shark.....	5	Shortfin devil ray.....	15
Shortfin mako shark.....	5	Indian ocean blue-spotted maskray.....	15
Longfin mako shark.....	6	Cowntail stingray.....	16
Lemon shark.....	6	Bownose guitarfish.....	16
Sicklefin lemon shark.....	7	Flapnose ray.....	17
Common thresher shark.....	7	Giant guitarfish ray.....	17
Pelagic thresher shark.....	8	Round ribbontail ray.....	18
Bigeye thresher shark.....	8	Black-spotted torpedo ray.....	18
Whitetip reef shark.....	9	Porcupine whipray.....	19
		Image Sources	20-21
		References	22

Key

Habitat

-  Benthic
-  Open Ocean/ Pelagic
-  Shallow Water/ Lagoon
-  Coral Reef/ Rocky Reef
-  Coastal Region
-  Deep Sea














Wild Life (Protection) Act 1972, Status

-  Schedule I
-  Schedule II
-  Not Protected

Catch

-  Allowed
-  Banned



Diet

-  Turtles
-  Fish
-  Squids/ Cuttlefish
-  Sea Snakes
-  Crabs/ Crustaceans
-  Shrimps
-  Octopuses
-  Rays
-  Bony fish
-  Benthic bivalves/Molluscs
-  Worms/ Invertebrates
-  Planktons
-  Diet Unknown

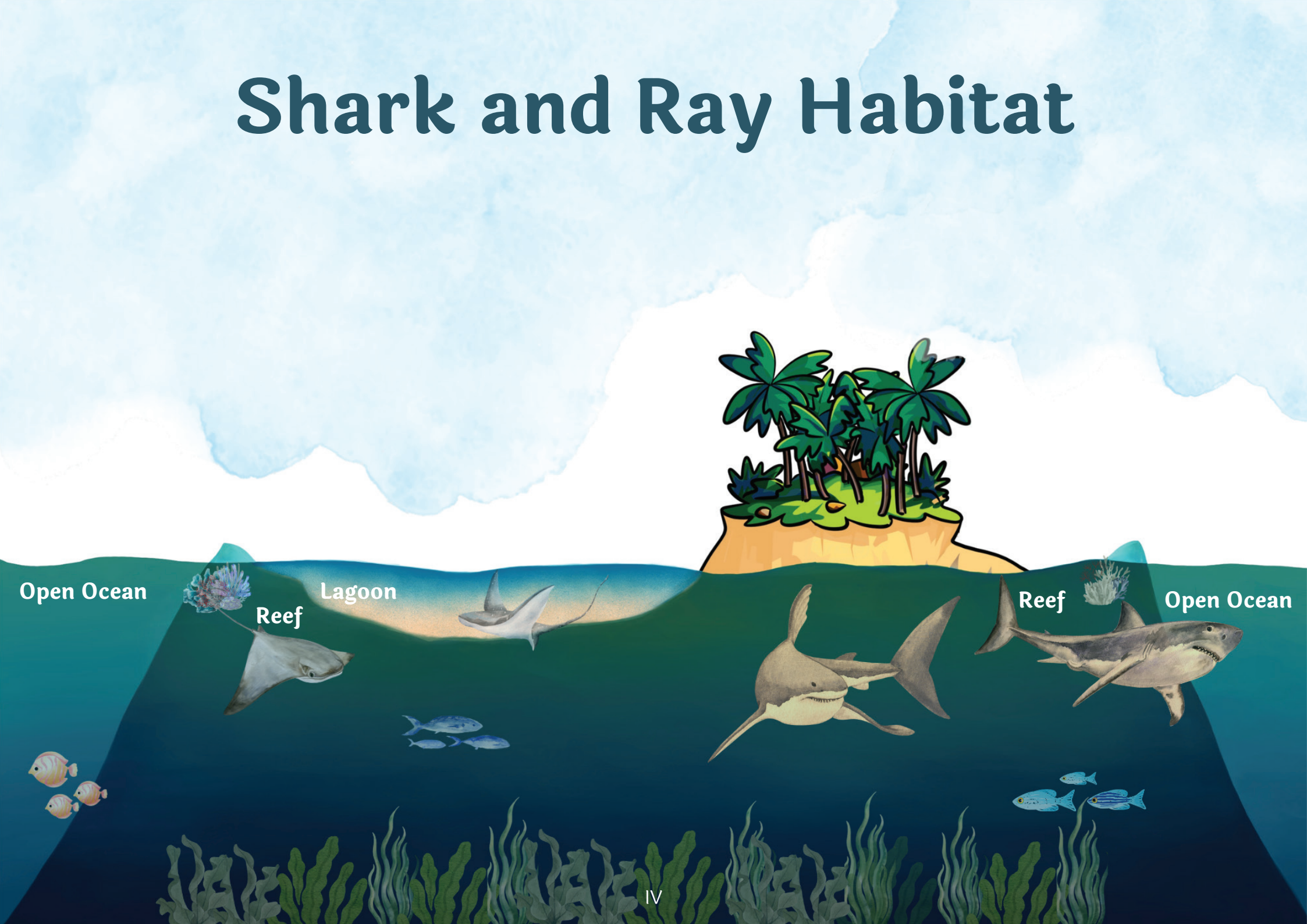
IUCN Status

-  Data Deficient
-  Near Threatened
-  Vulnerable
-  Endangered
-  Critically Endangered
-  Not Evaluated

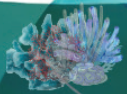
Size

-  Maximum length for the shark species
-  Maximum length for the ray species

Shark and Ray Habitat



Open Ocean

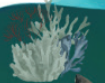


Reef

Lagoon



Reef



Open Ocean

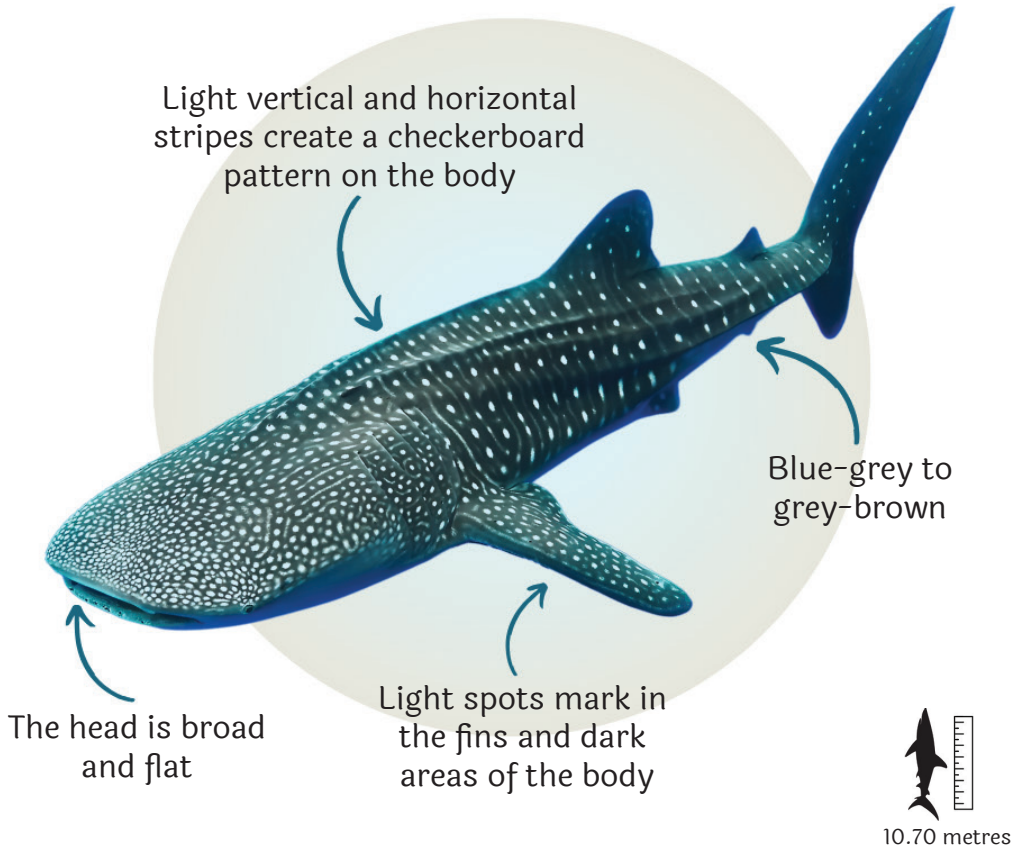


Sharks



Whale shark

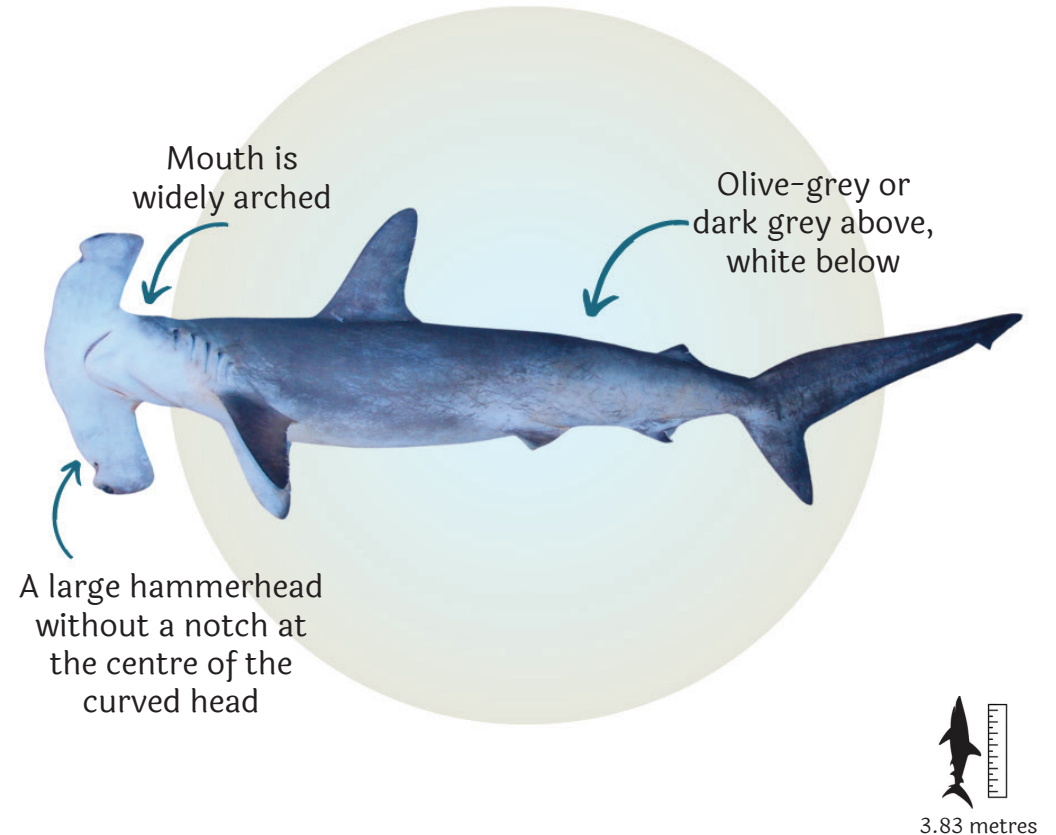
(Rhincodon typus)



Habitat	
Diet	
Catch	
IUCN Status	
Wild Life (Protection) Act, 1972, Status	

Smooth hammerhead shark

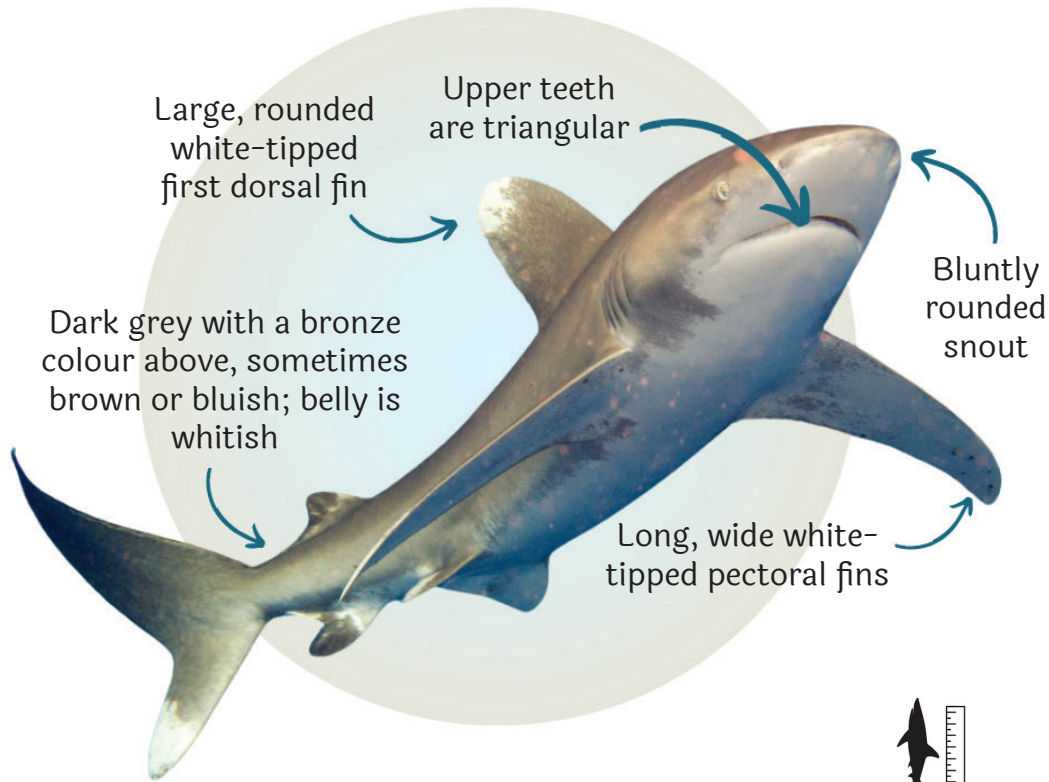
(Sphyrna zygaena)













Habitat	
Diet	
Catch	
IUCN Status	
Wild Life (Protection) Act, 1972, Status	

Oceanic whitetip shark

(Carcharhinus longimanus)

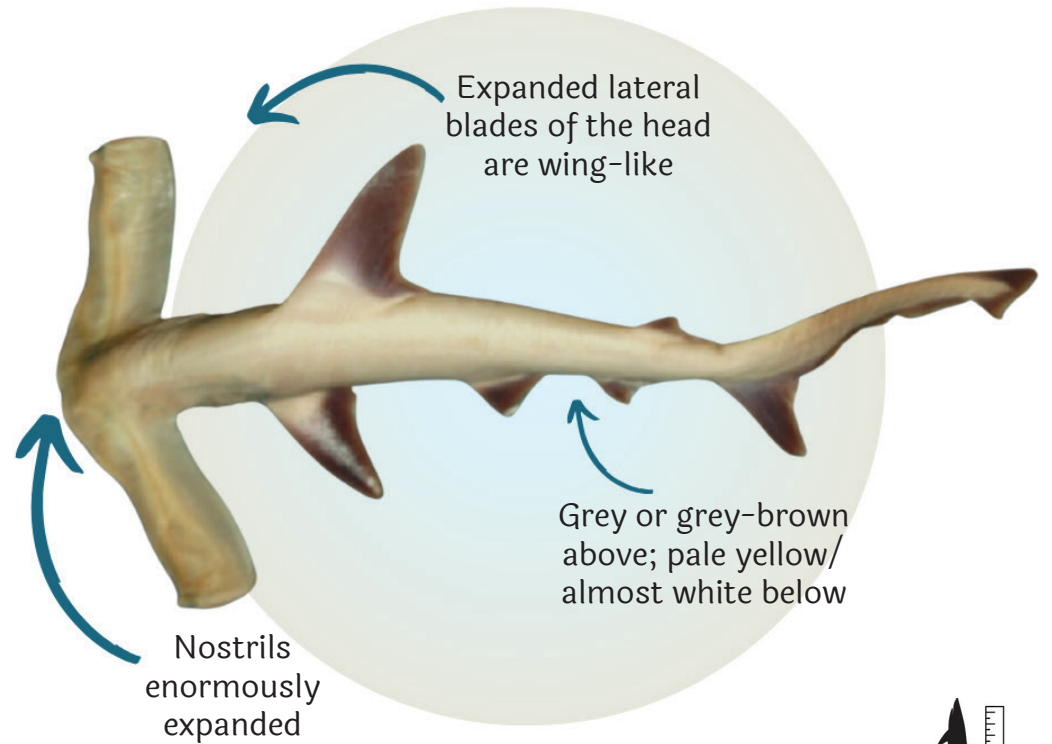




2.90 metres









Habitat	
Diet	    
Catch	
IUCN Status	
Wild Life (Protection) Act, 1972, Status	

Winghead shark

(Eusphyra blochii)

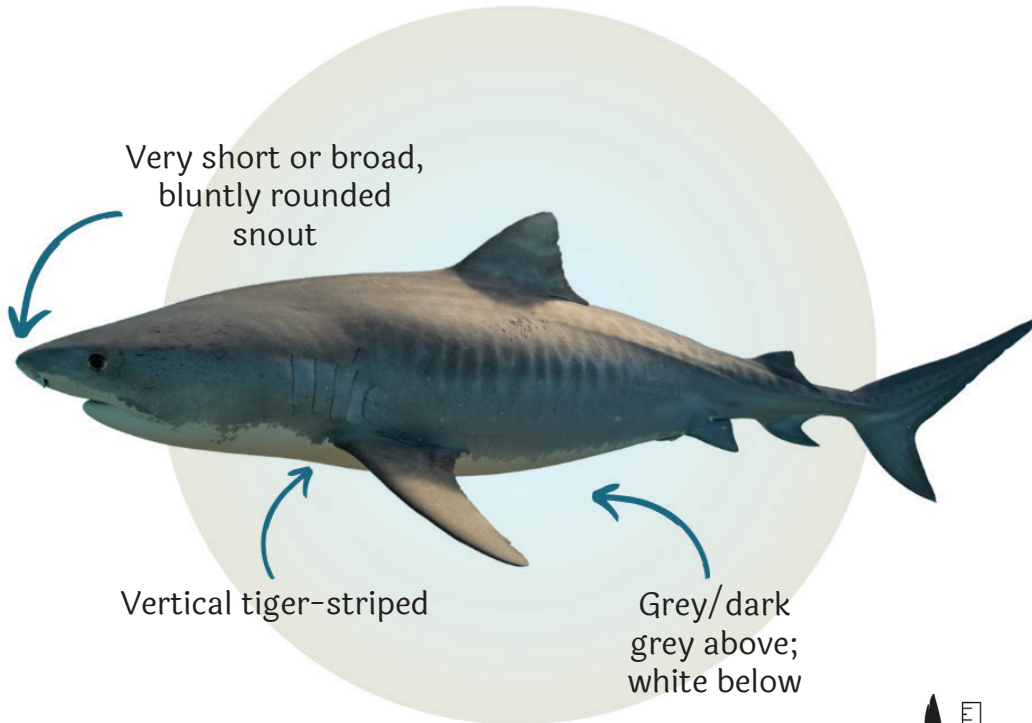




1.53 metres






Habitat	
Diet	   
Catch	
IUCN Status	
Wild Life (Protection) Act, 1972, Status	

Tiger shark

(*Galeocerdo cuvier*)

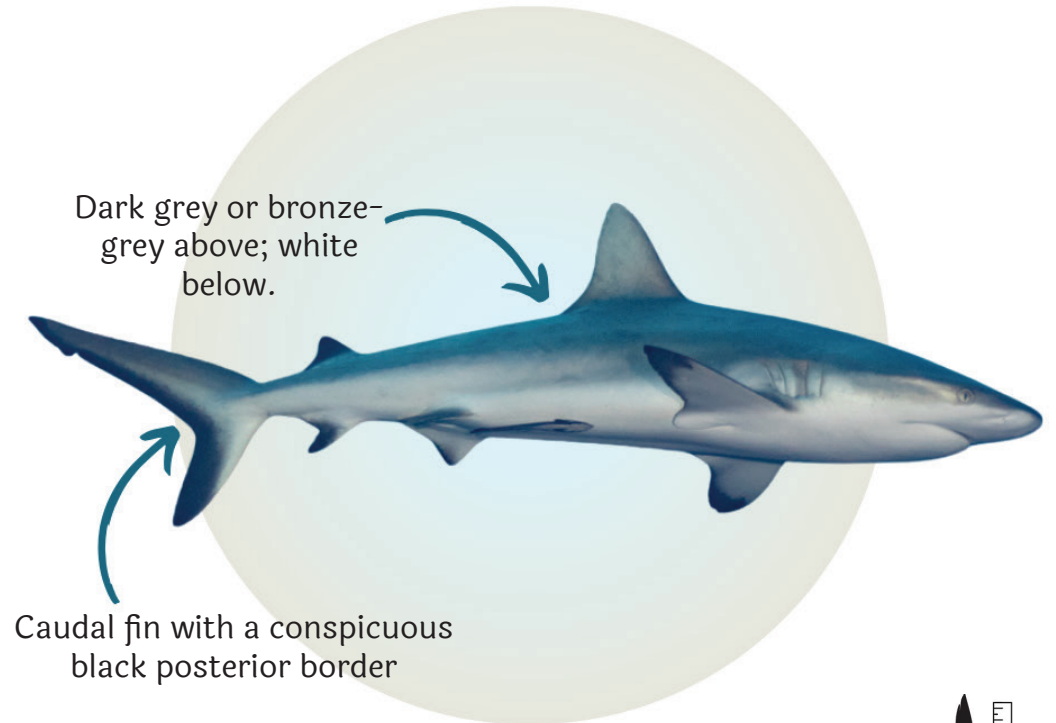




4.80 metres






Habitat	
Diet	
Catch	
IUCN Status	
Wild Life (Protection) Act, 1972, Status	

Grey reef shark

(*Carcharhinus amblyrhynchos*)

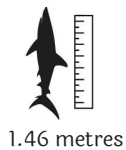
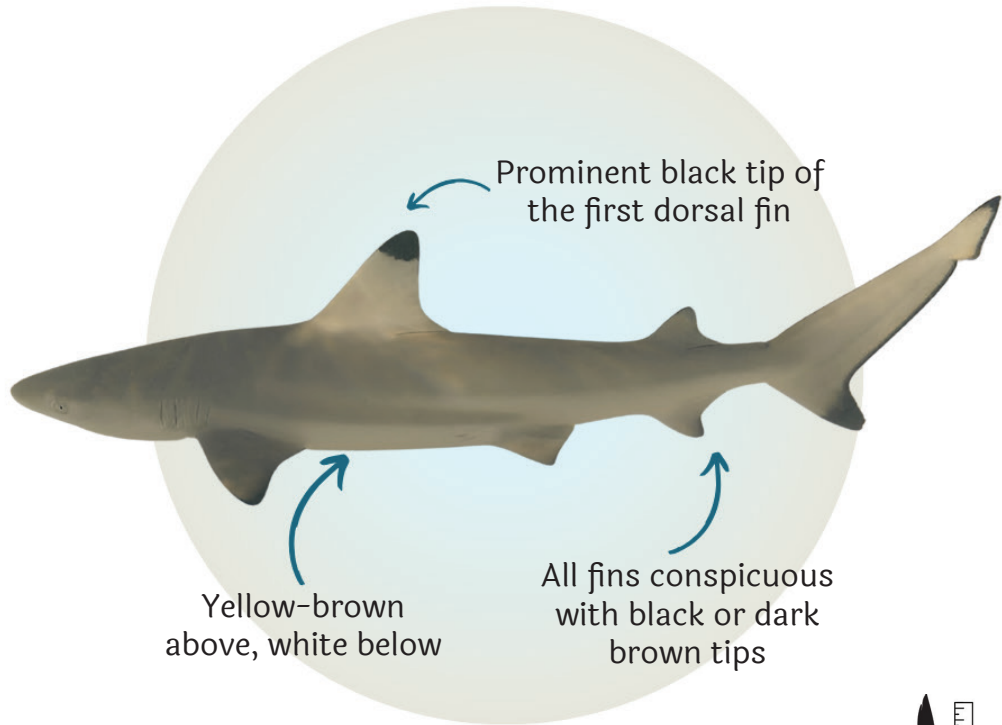



1.76 metres

Habitat	
Diet	
Catch	
IUCN Status	
Wild Life (Protection) Act, 1972, Status	

Blacktip reef shark

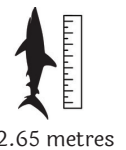
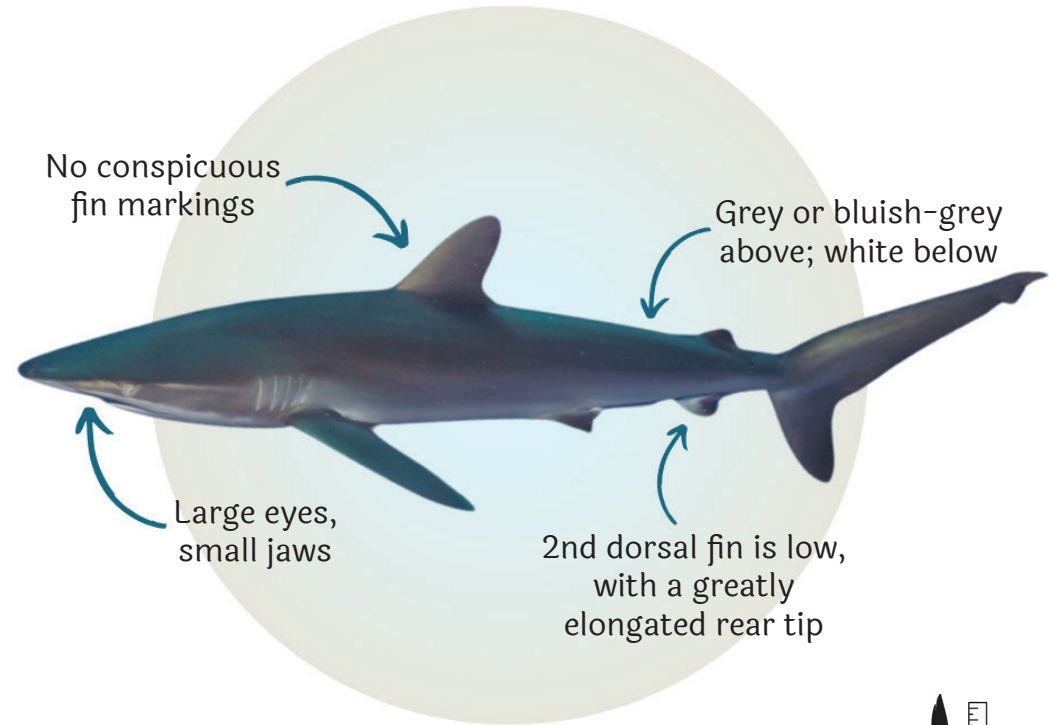
(Carcharhinus melanopterus)



Habitat	
Diet	
Catch	
IUCN Status	
Wild Life (Protection) Act, 1972, Status	

Silky shark

(Carcharhinus falciformis)



Habitat	
Diet	
Catch	
IUCN Status	
Wild Life (Protection) Act, 1972, Status	

Blacktip shark

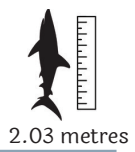
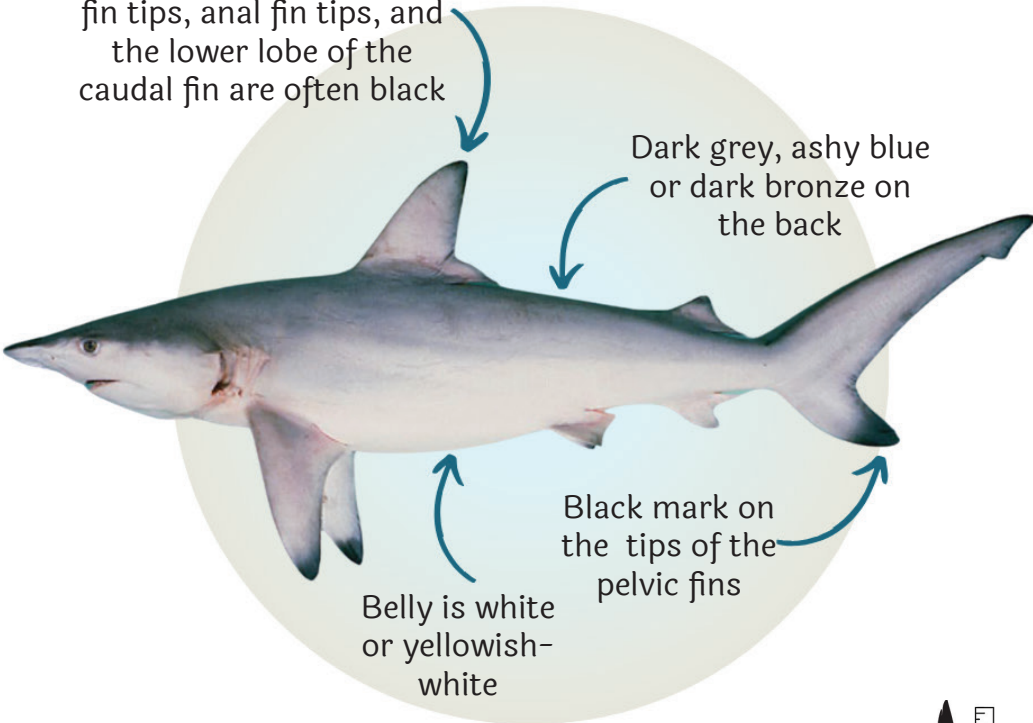
(Carcharhinus limbatus)

Dorsal fin tips, pectoral fin tips, anal fin tips, and the lower lobe of the caudal fin are often black

Dark grey, ashy blue or dark bronze on the back

Black mark on the tips of the pelvic fins

Belly is white or yellowish-white



Habitat	
Diet	
Catch	
IUCN Status	
Wild Life (Protection) Act, 1972, Status	

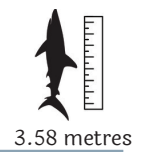
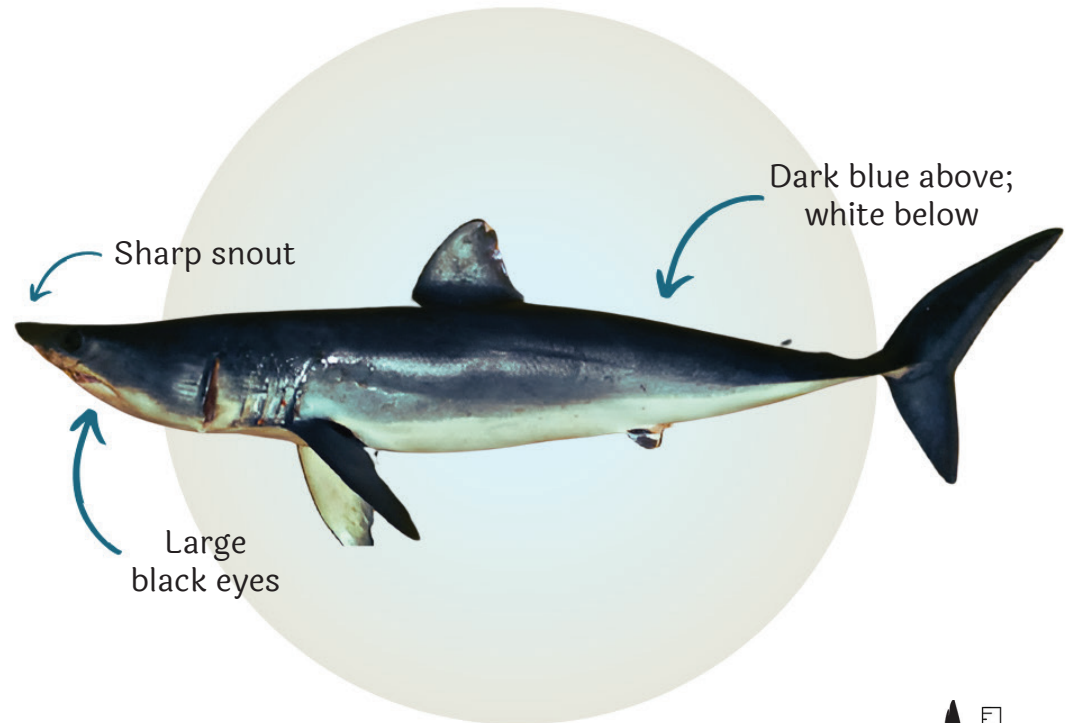
Shortfin mako shark

(Isurus oxyrinchus)

Dark blue above; white below

Sharp snout

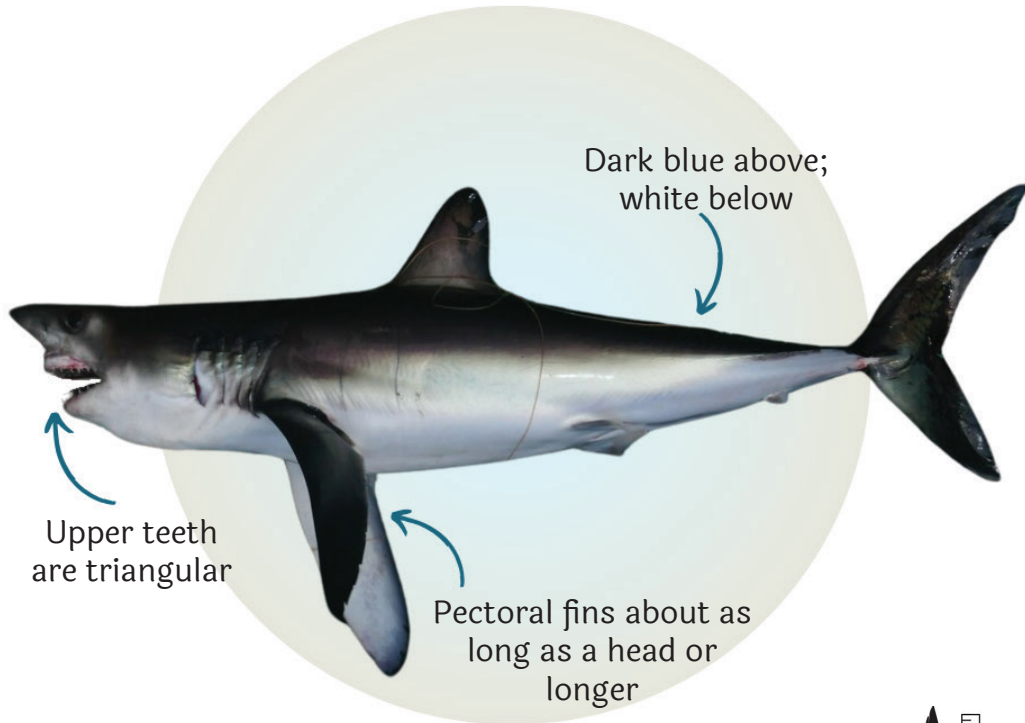
Large black eyes









Habitat	
Diet	
Catch	
IUCN Status	
Wild Life (Protection) Act, 1972, Status	

Longfin mako shark

(Isurus paucus)

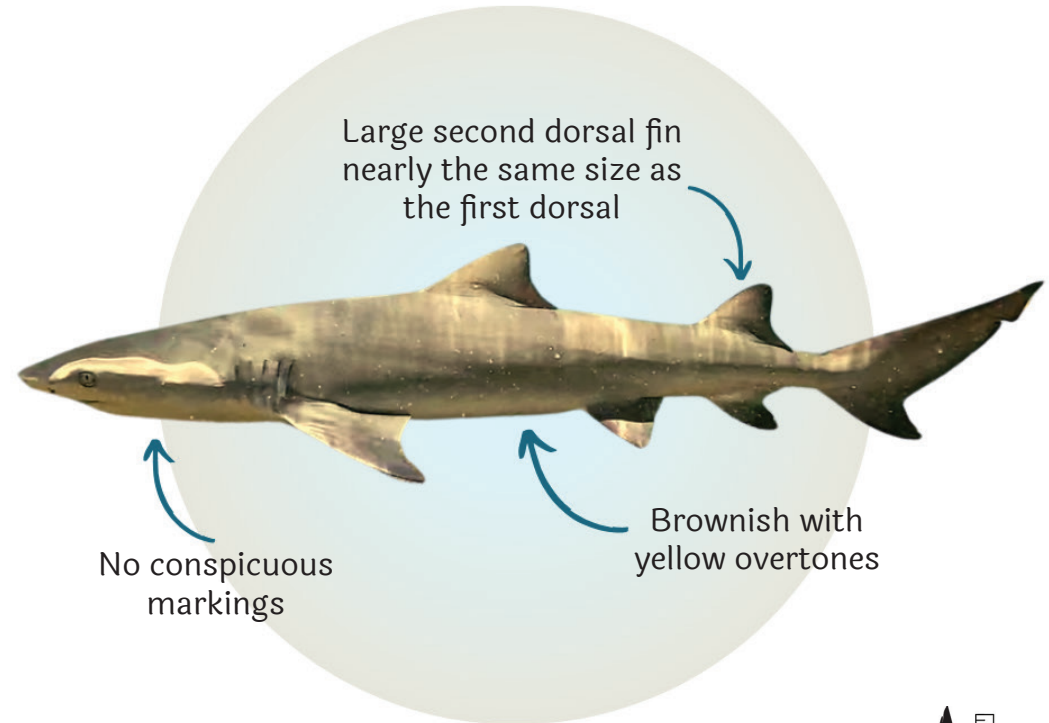




3.58 metres






Habitat	
Diet	
Catch	
IUCN Status	
Wild Life (Protection) Act, 1972, Status	

Lemon shark

(Negaprion brevirostris)

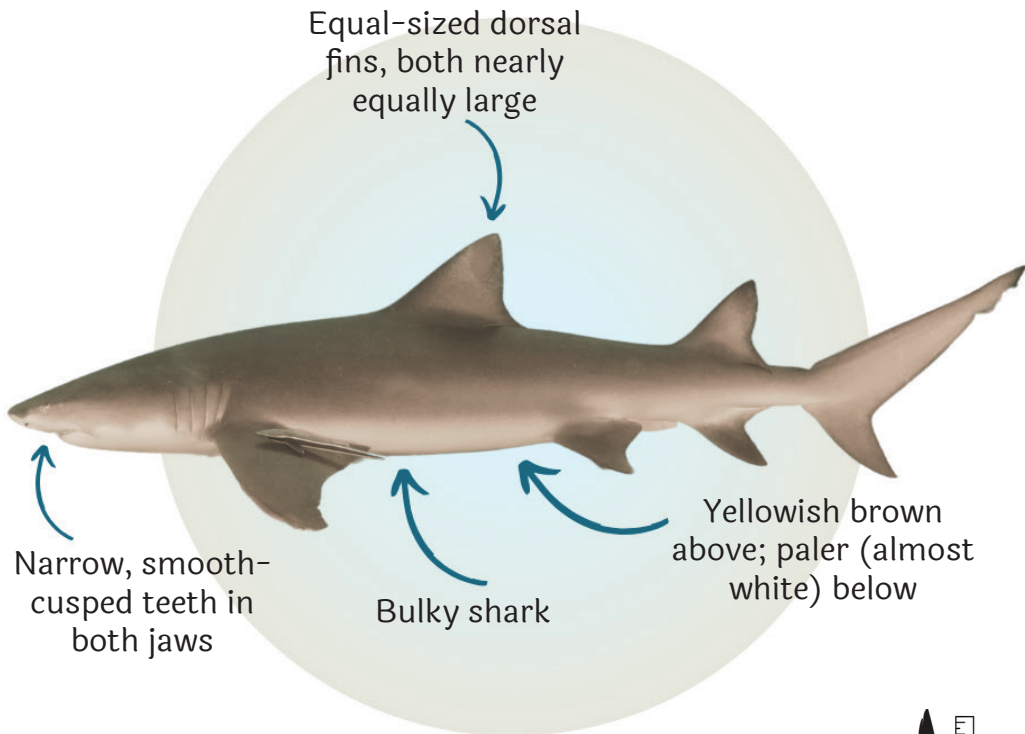



3.14 metres

Habitat	
Diet	
Catch	
IUCN Status	
Wild Life (Protection) Act, 1972, Status	

Sharptooth lemon shark

(Negaprion acutidens)

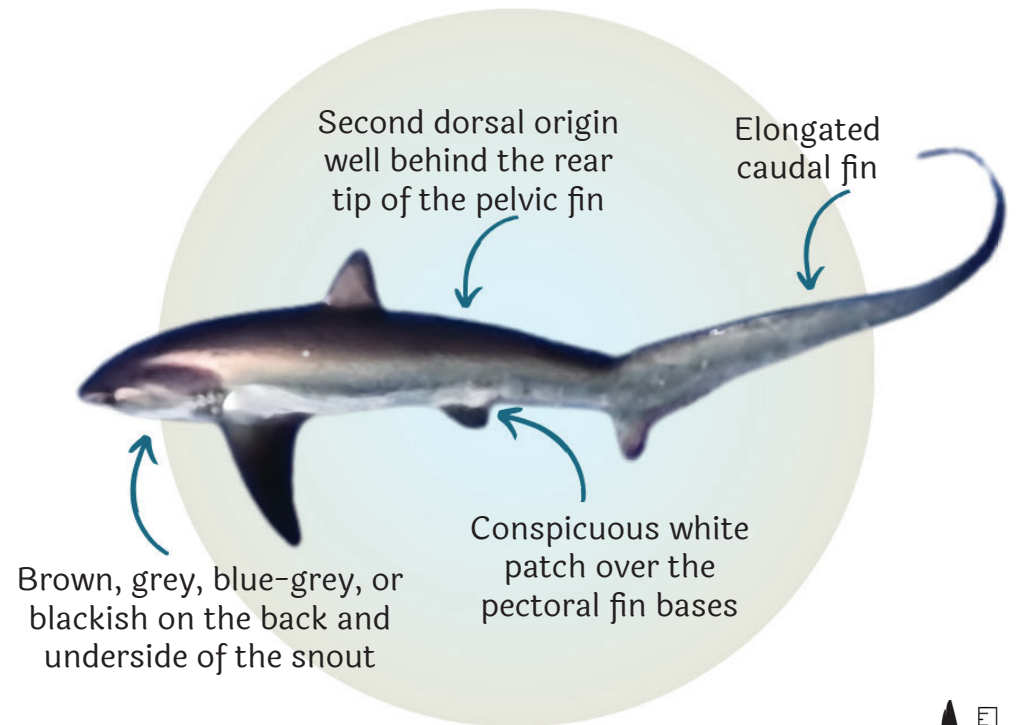


2.90 metres

Habitat	
Diet	
Catch	
IUCN Status	
Wild Life (Protection) Act, 1972, Status	

Common thresher shark

(Alopias vulpinus)

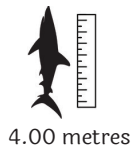
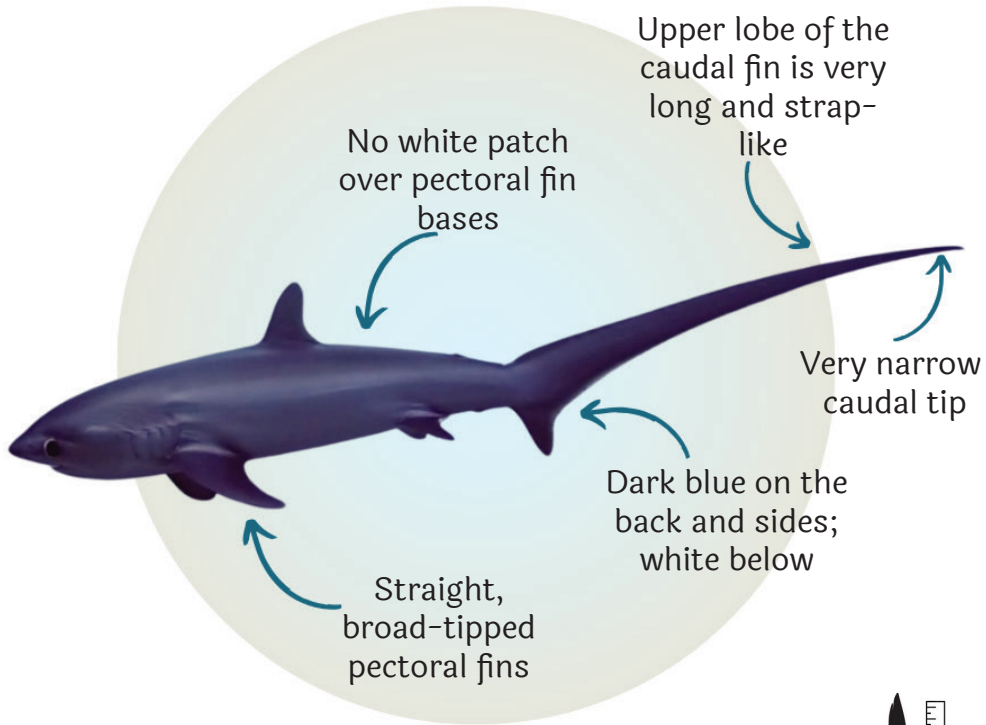


3.00 metres

Habitat	
Diet	
Catch	
IUCN Status	
Wild Life (Protection) Act, 1972, Status	

Pelagic thresher shark

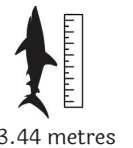
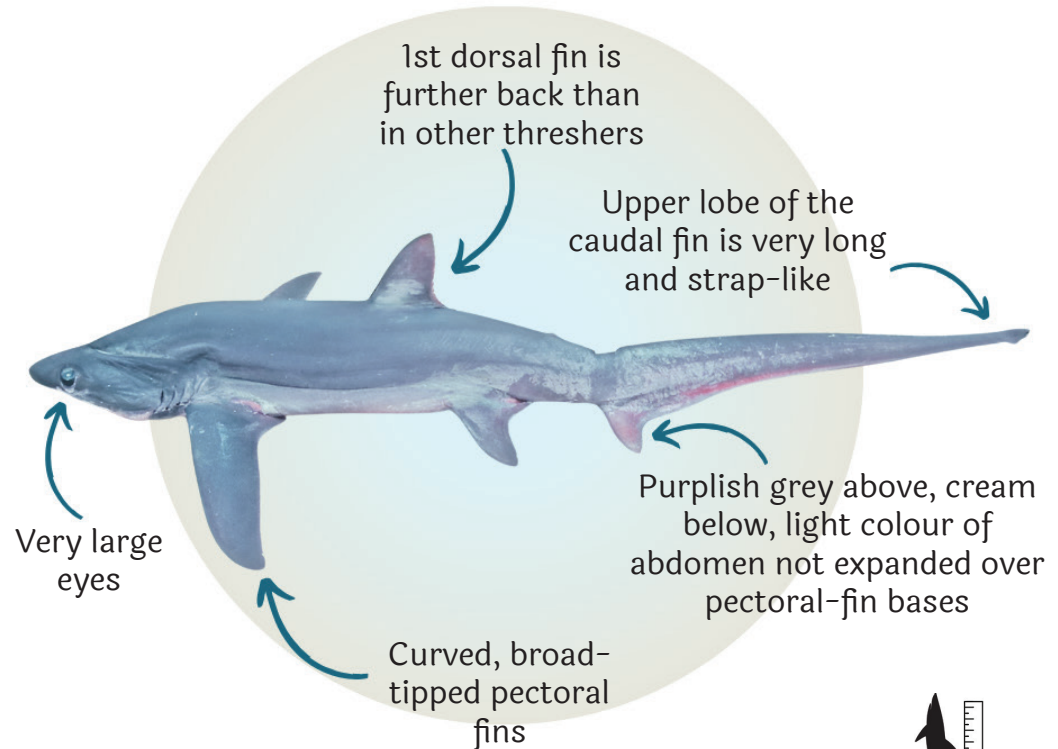
(Alopias pelagicus)



Habitat	
Diet	
Catch	
IUCN Status	
Wild Life (Protection) Act, 1972, Status	

Bigeye thresher shark

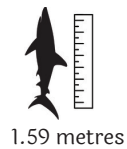
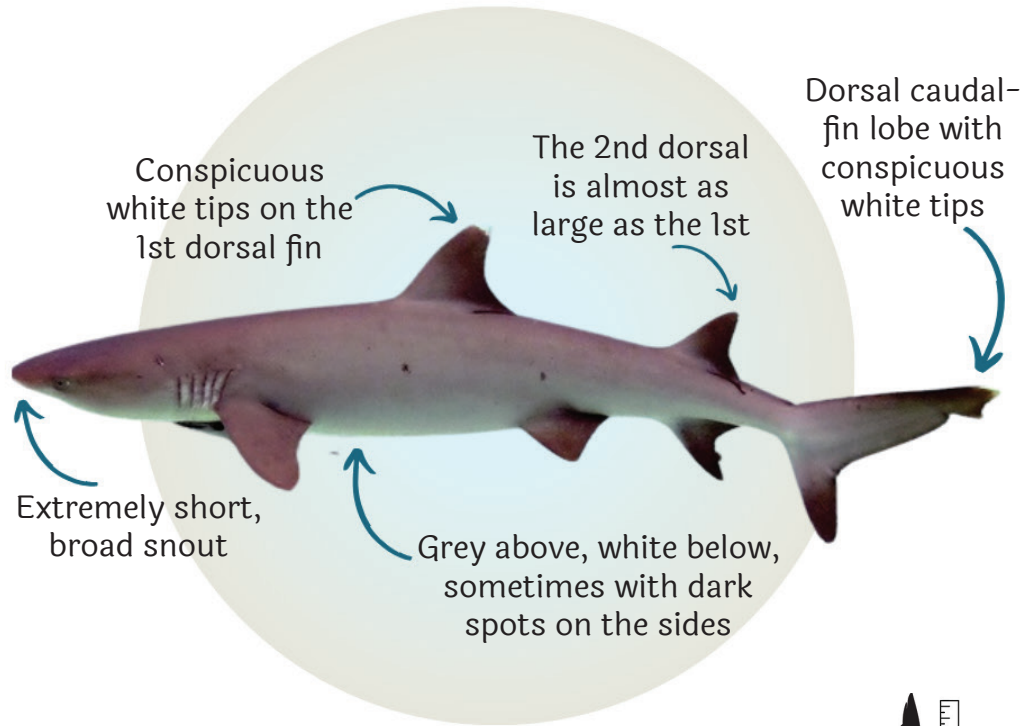
(Alopias superciliosus)



Habitat	
Diet	
Catch	
IUCN Status	
Wild Life (Protection) Act, 1972, Status	

Whitetip reef shark

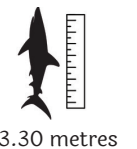
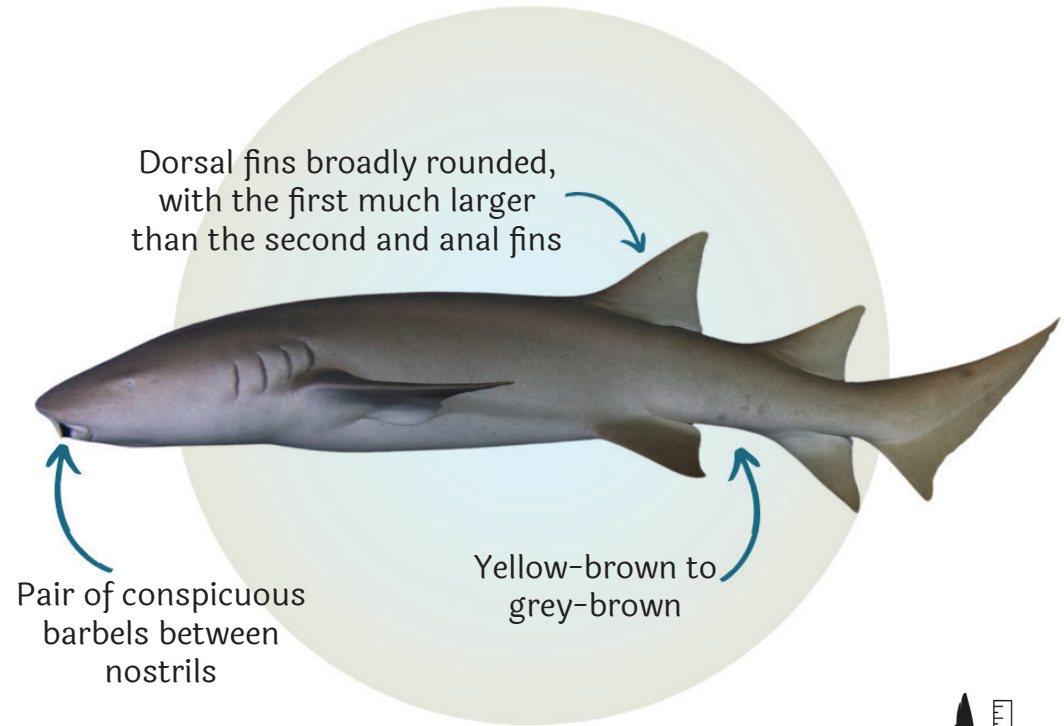
(Triaenodon obesus)



Habitat	
Diet	
Catch	
IUCN Status	
Wild Life (Protection) Act, 1972, Status	

Atlantic nurse shark

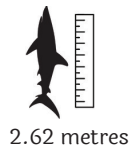
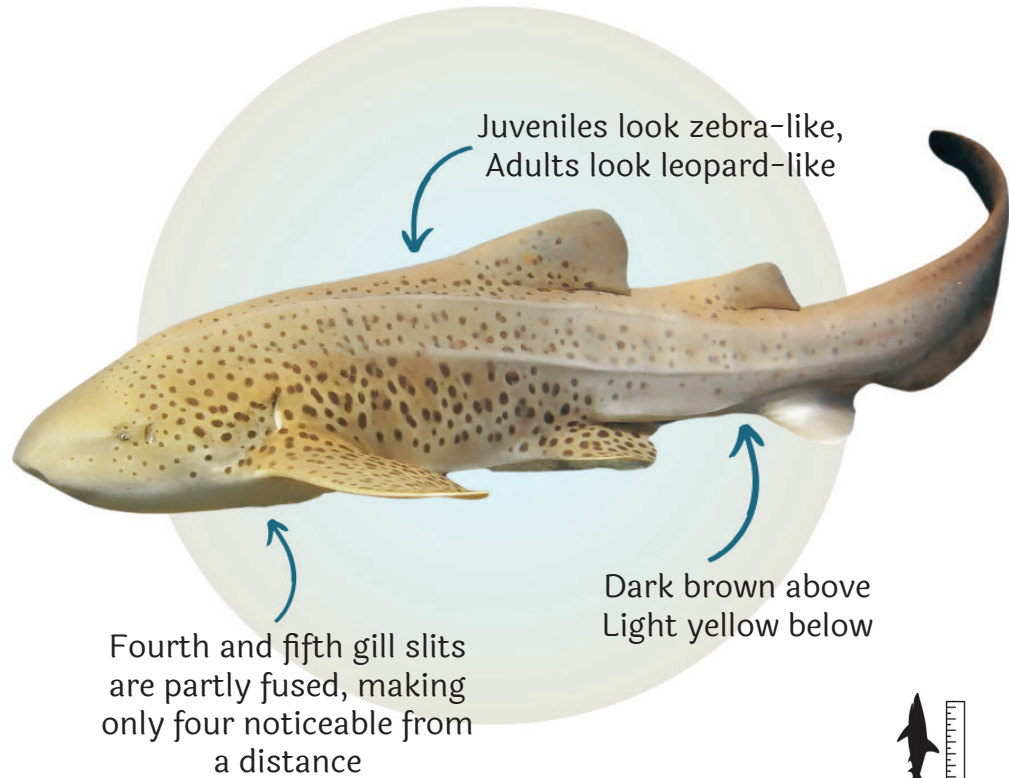
(Ginglymostoma cirratum)



Habitat	
Diet	
Catch	
IUCN Status	
Wild Life (Protection) Act, 1972, Status	

Indo-pacific leopard shark

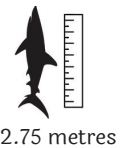
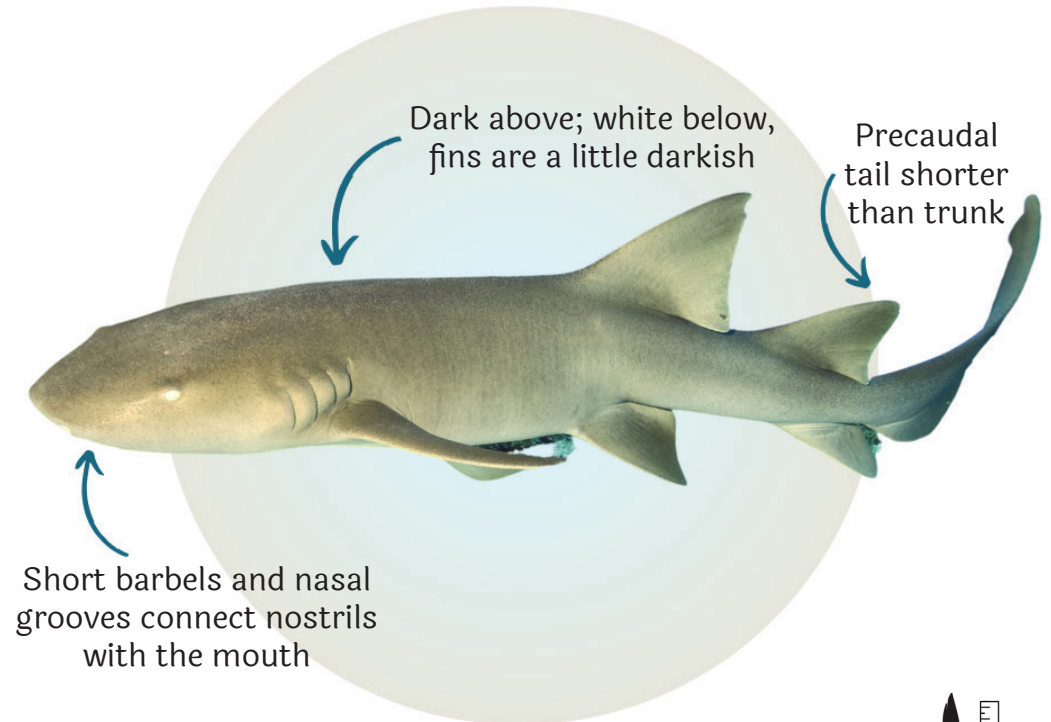
(*Stegostoma tigrinum*)



Habitat	
Diet	
Catch	
IUCN Status	
Wild Life (Protection) Act, 1972, Status	

Tawny nurse shark

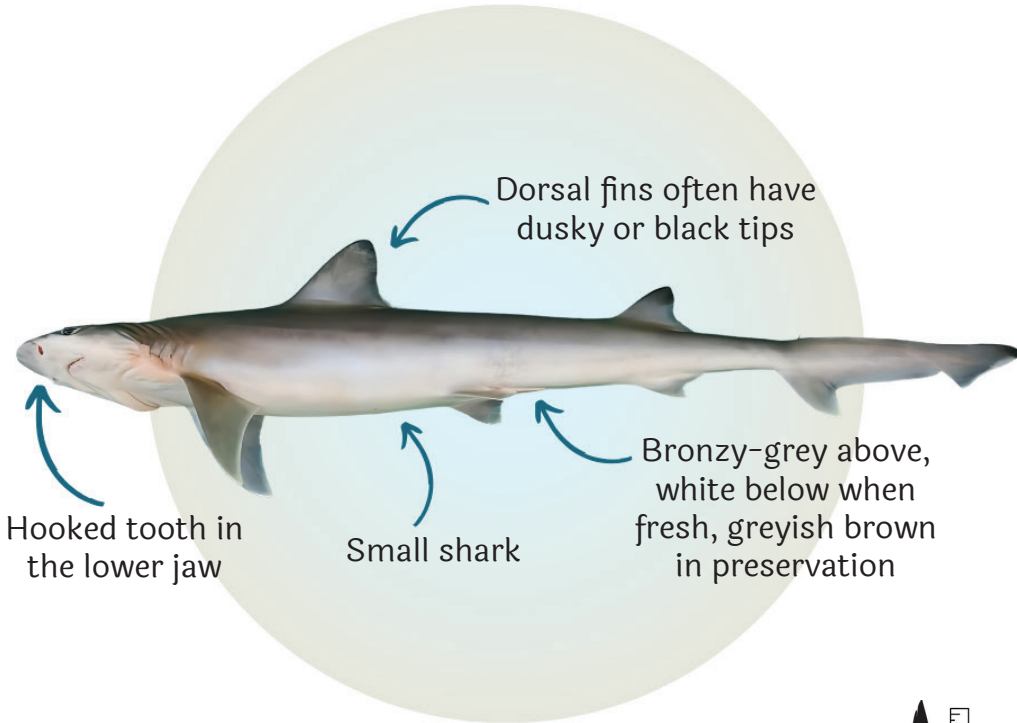
(*Nebrius ferrugineus*)



Habitat	
Diet	
Catch	
IUCN Status	
Wild Life (Protection) Act, 1972, Status	

Hooktooth shark

(Chaenogaleus macrostoma)

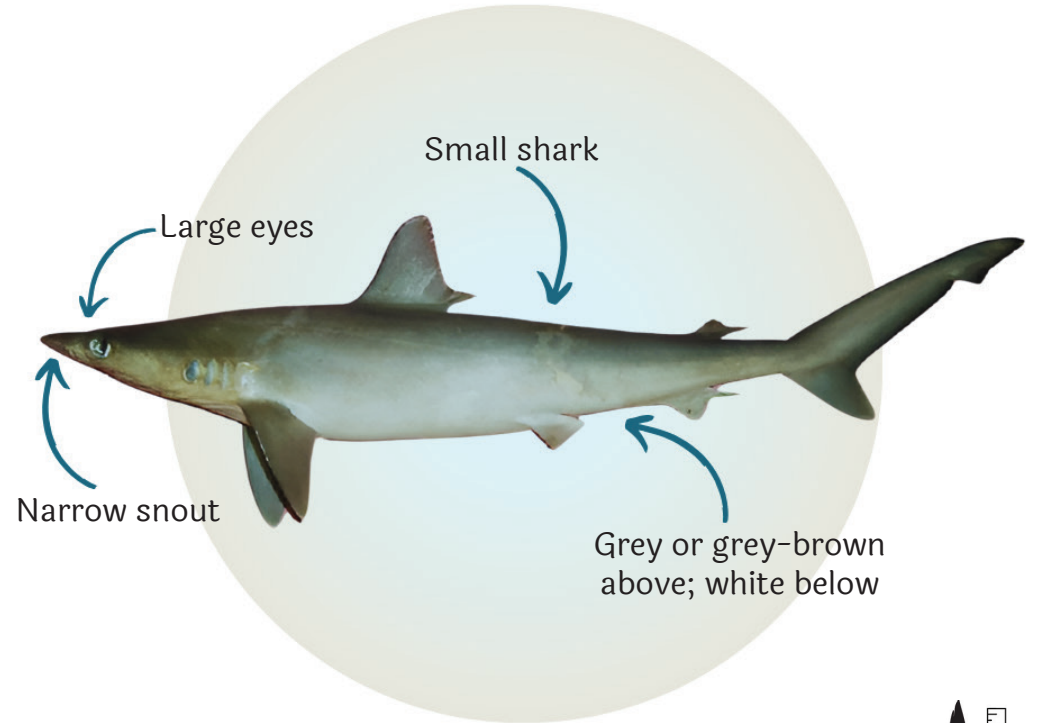


0.84 metres

Habitat	
Diet	
Catch	
IUCN Status	
Wild Life (Protection) Act, 1972, Status	

Milk shark

(Rhizoprionodon acutus)

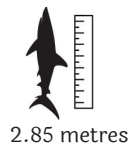
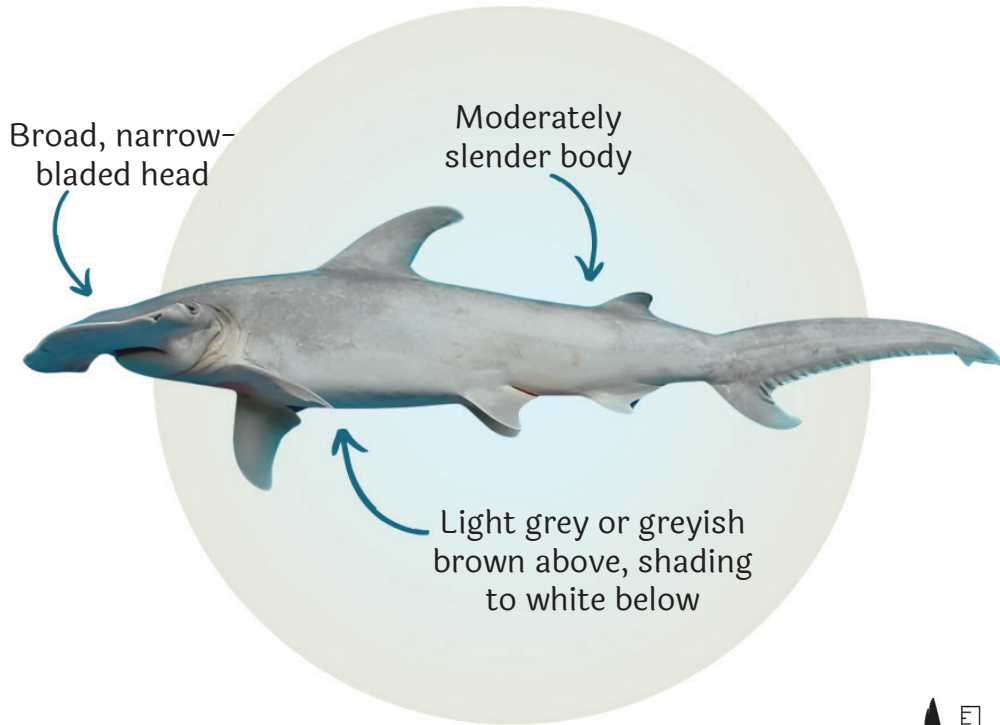


1.23 metres

Habitat	
Diet	
Catch	
IUCN Status	
Wild Life (Protection) Act, 1972, Status	

Scalloped hammerhead shark

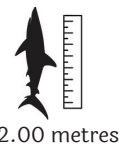
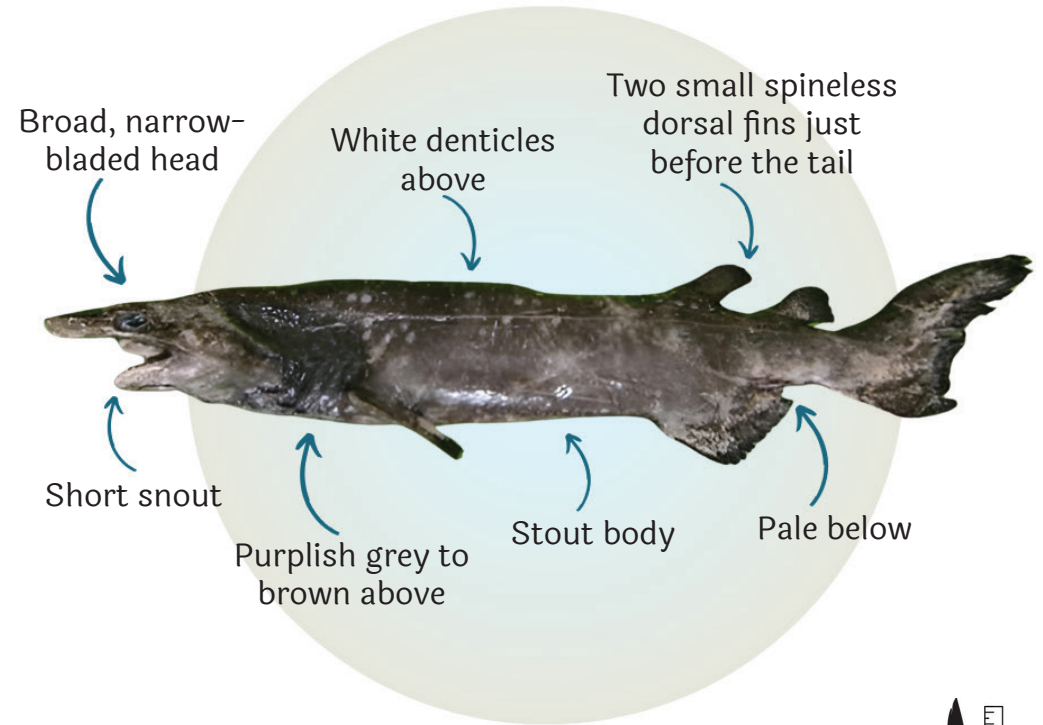
(Sphyrna lewini)



Habitat	
Diet	
Catch	
IUCN Status	
Wild Life (Protection) Act, 1972, Status	

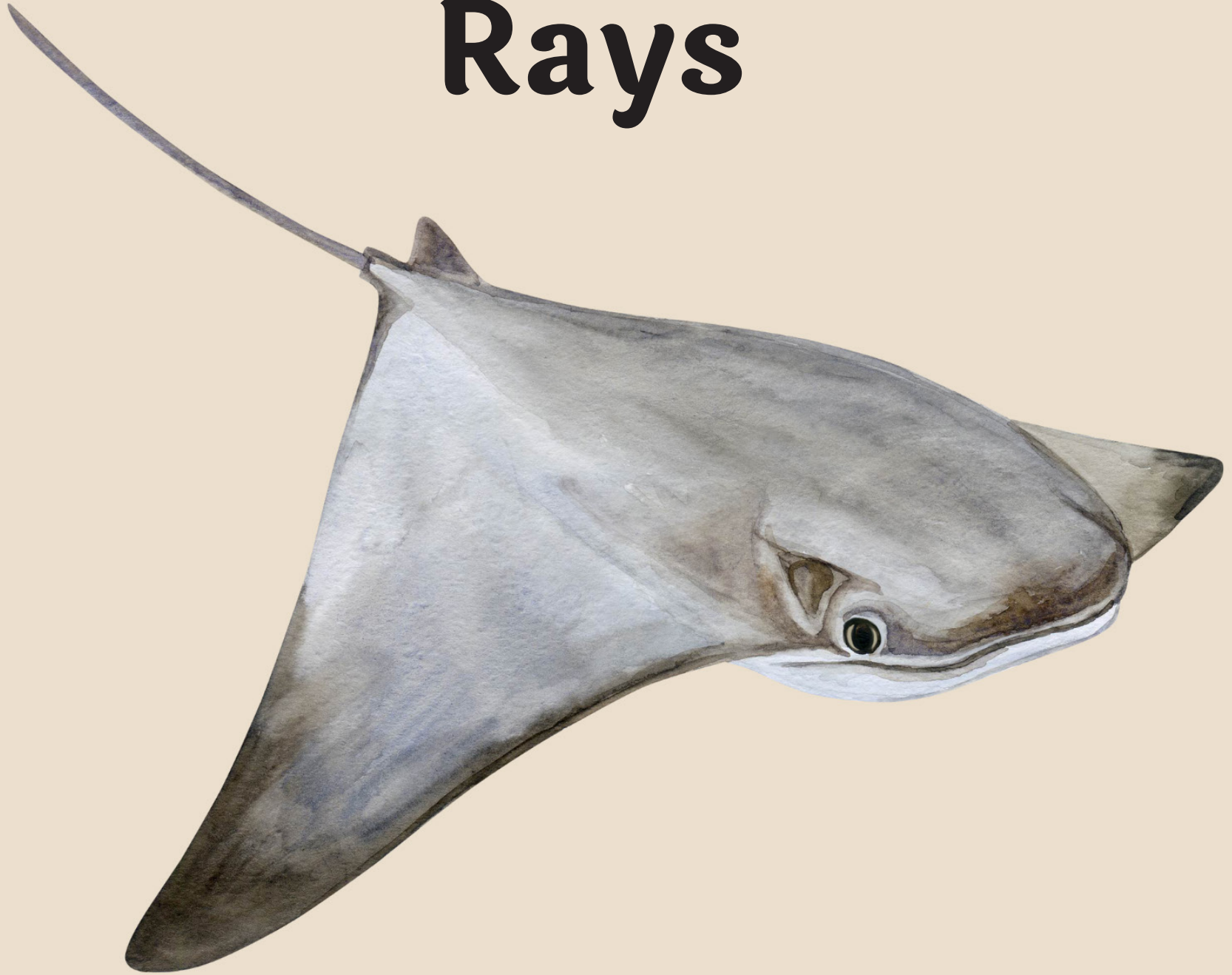
Bramble shark

(Echinorhinus brucus)



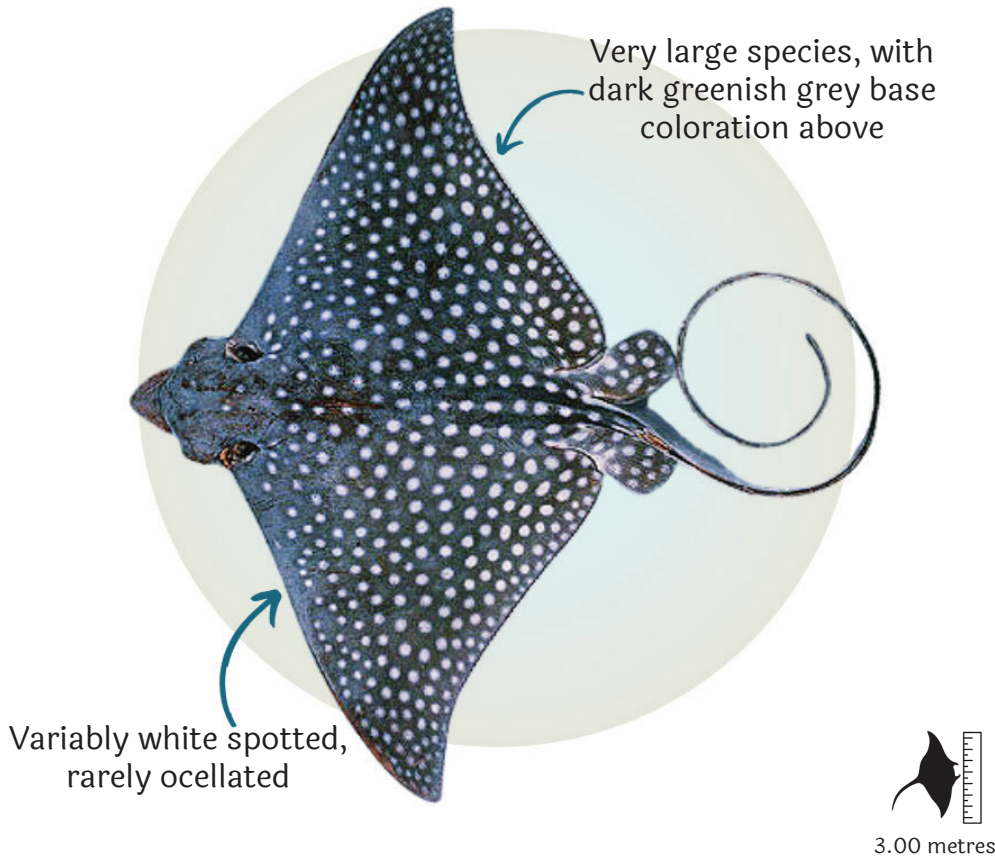
Habitat	
Diet	
Catch	
IUCN Status	
Wild Life (Protection) Act, 1972, Status	

Rays



Spotted eagle ray

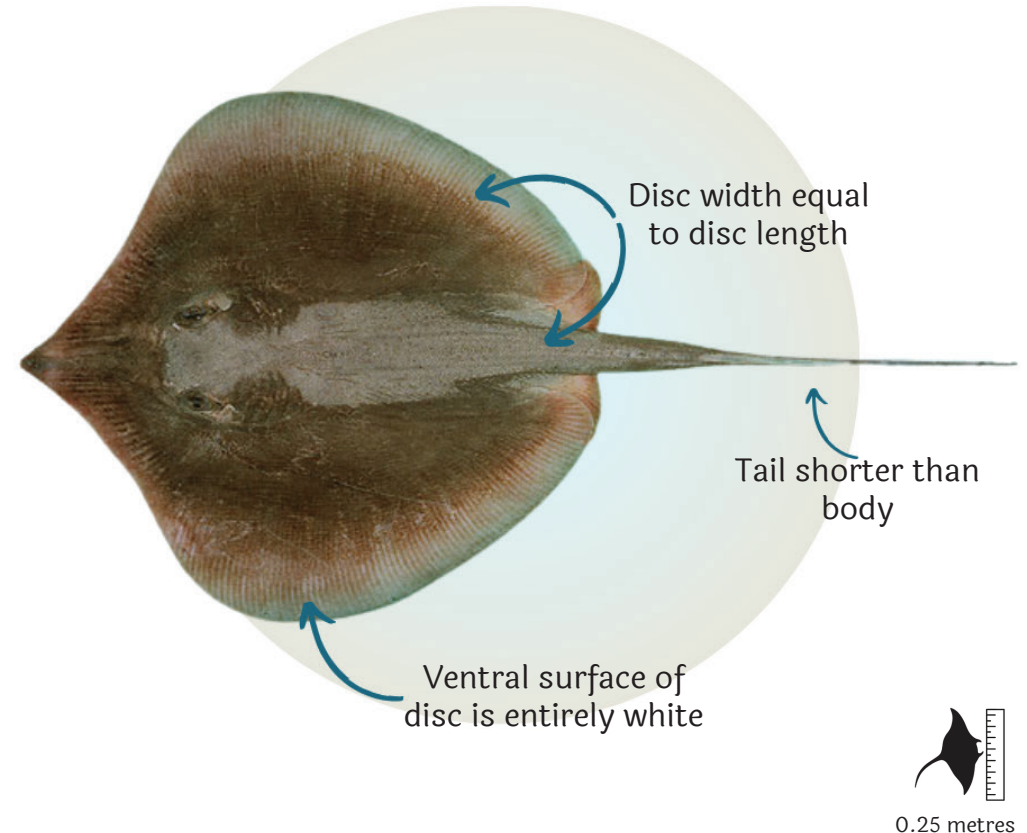
(Aetobatus ocellatus)



Habitat	
Diet	
Catch	
IUCN Status	
Wild Life (Protection) Act, 1972, Status	

Bengal whipray

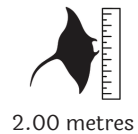
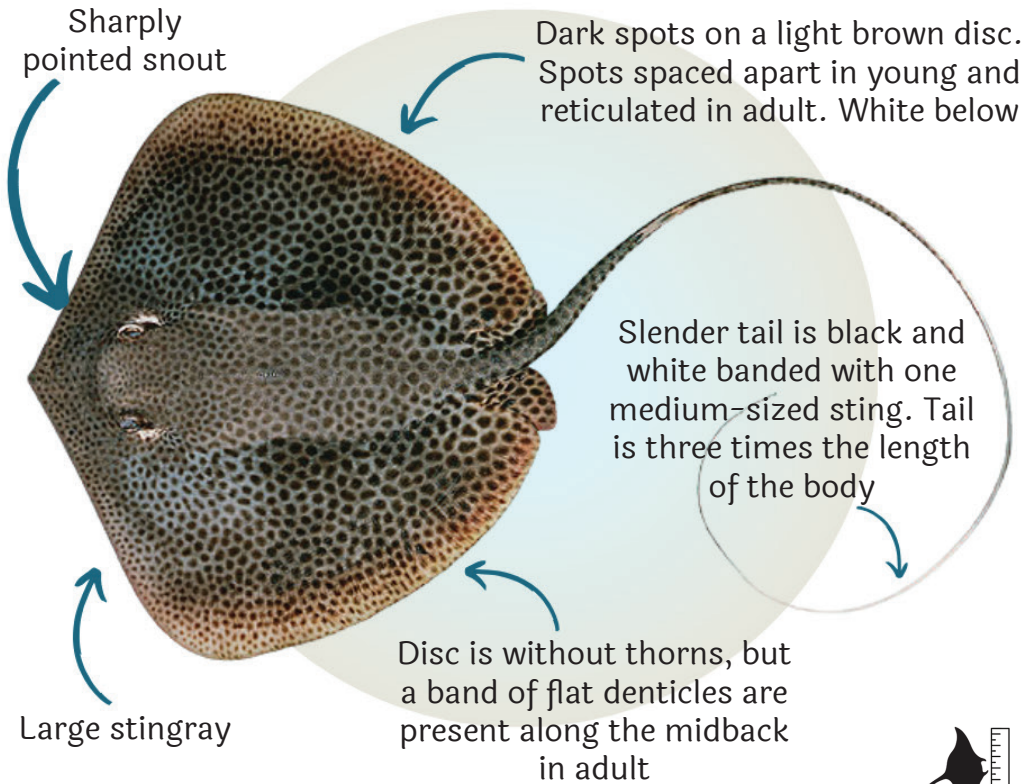
(Brevitrygon imbricata)



Habitat	
Diet	
Catch	
IUCN Status	
Wild Life (Protection) Act, 1972, Status	

Coach whipray

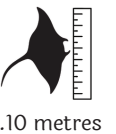
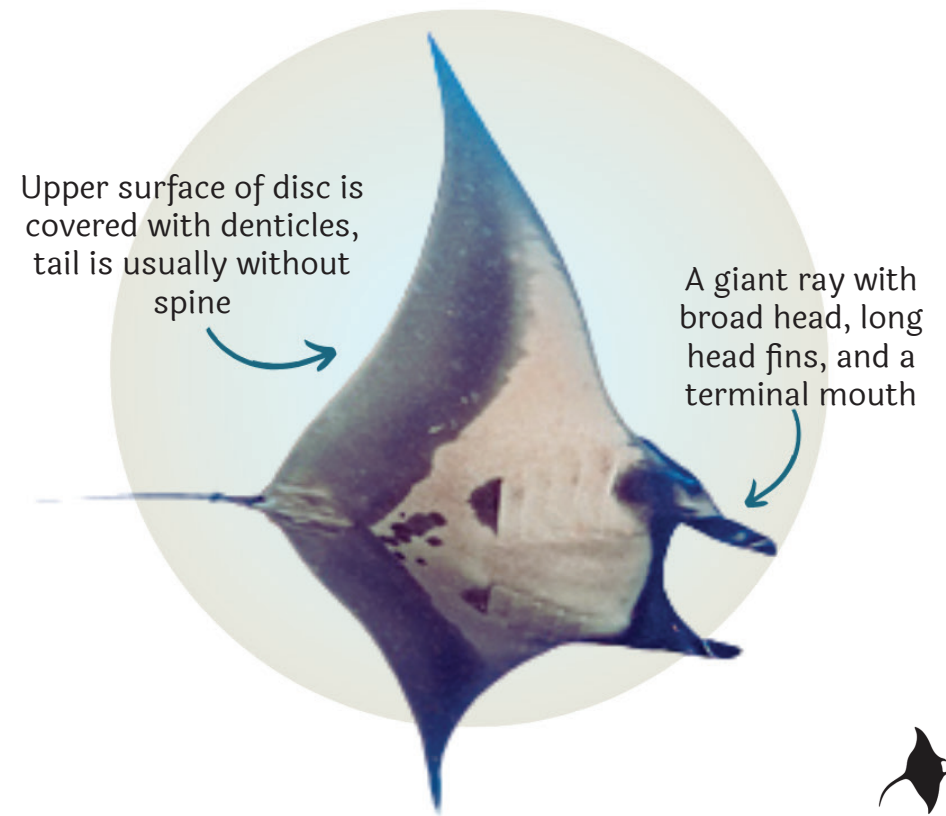
(Himantura uarnak)



Habitat	
Diet	
Catch	
IUCN Status	
Wild Life (Protection) Act, 1972, Status	

Oceanic manta ray

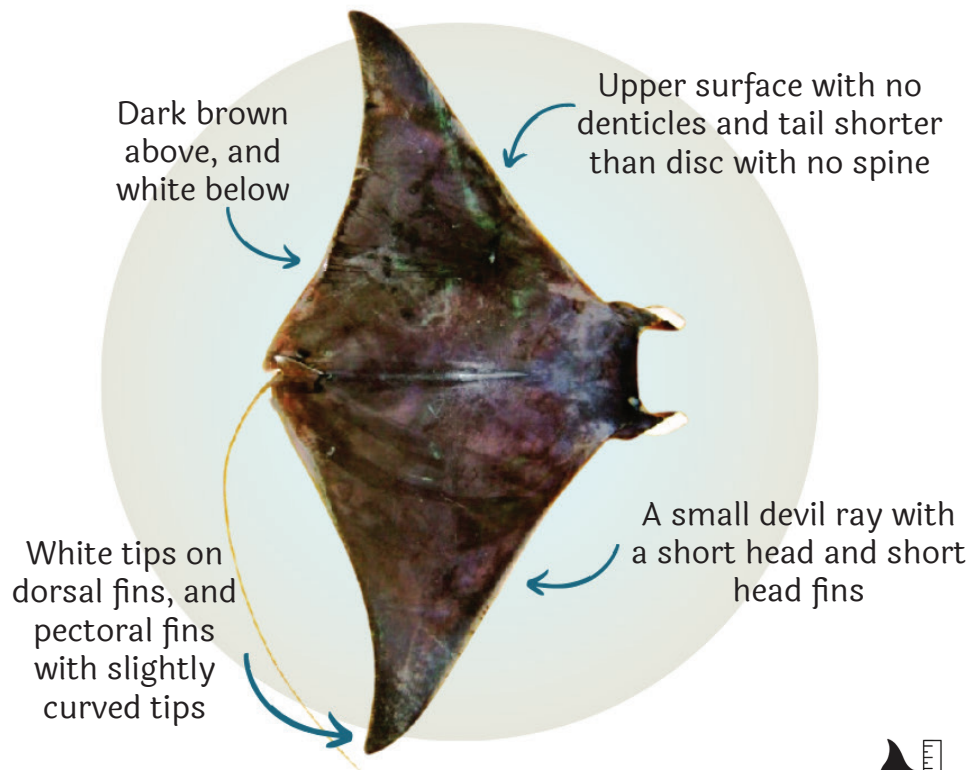
(Mobula birostris)



Habitat	
Diet	
Catch	
IUCN Status	
Wild Life (Protection) Act, 1972, Status	

Shorthorned pygmy devil ray

(Mobula kuhlii)

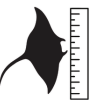
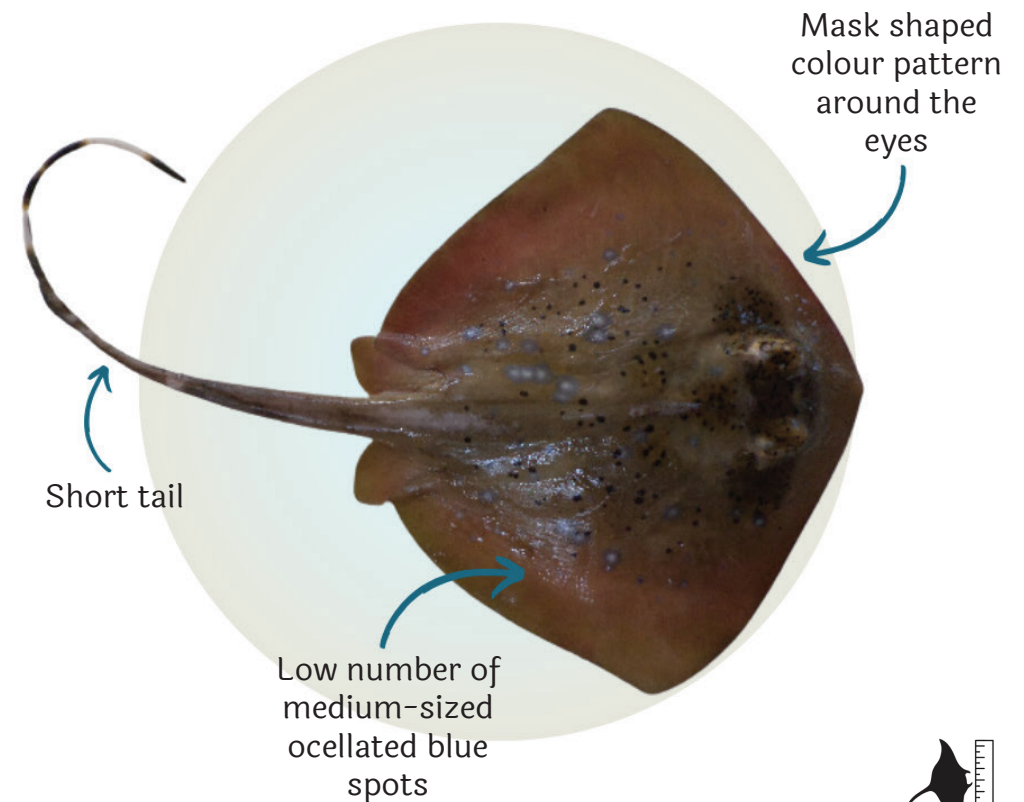


1.19 metres

Habitat	
Diet	
Catch	
IUCN Status	
Wild Life (Protection) Act, 1972, Status	

Indian ocean blue-spotted maskray

(Neotrygon indica)

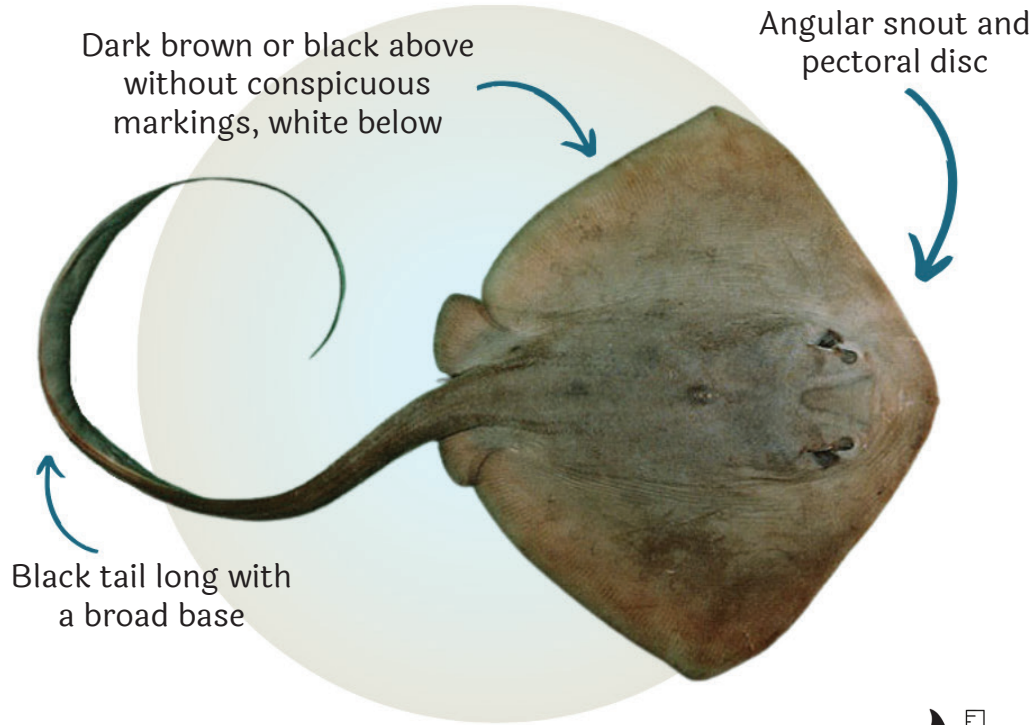


0.31 metres

Habitat	
Diet	
Catch	
IUCN Status	
Wild Life (Protection) Act, 1972, Status	

Cowtail ray

(Pastinachus sephen)

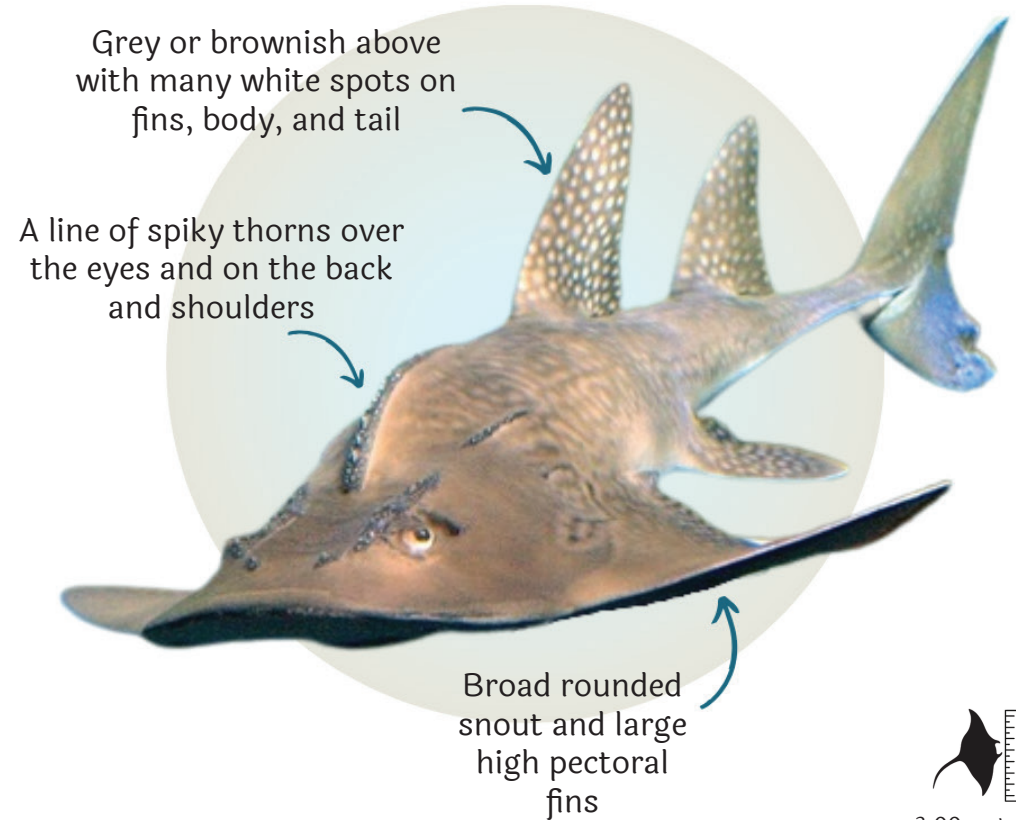


1.83 metres

Habitat	
Diet	
Catch	
IUCN Status	
Wild Life (Protection) Act, 1972, Status	

Bowmouth guitarfish

(Rhina ancylostomus)

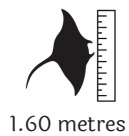
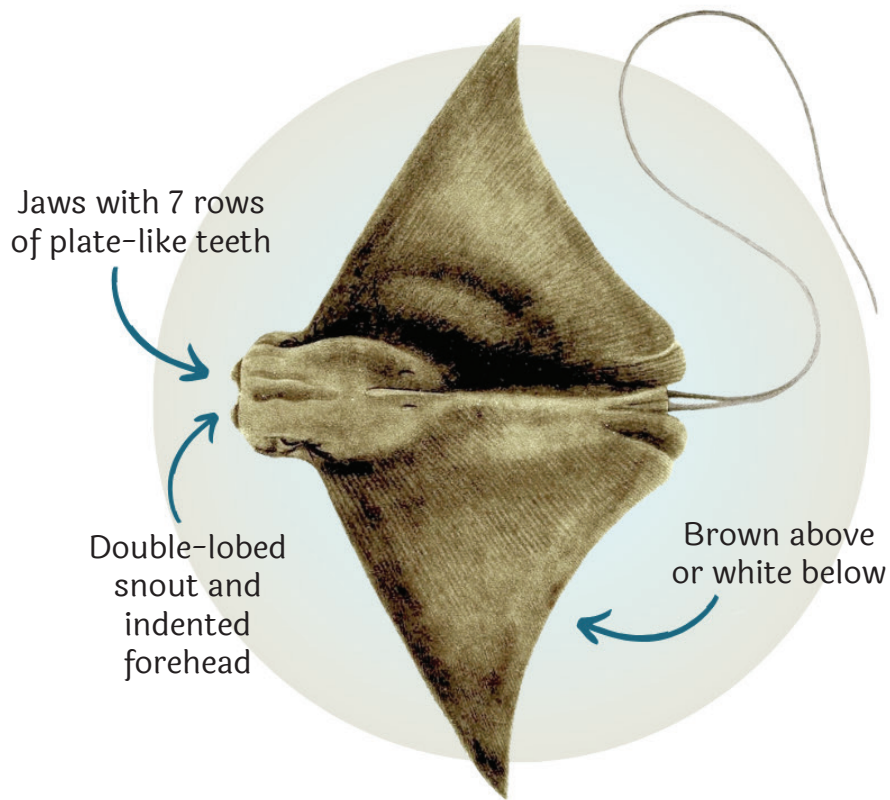


3.00 metres

Habitat	
Diet	
Catch	
IUCN Status	
Wild Life (Protection) Act, 1972, Status	

Javanese cownose ray

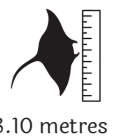
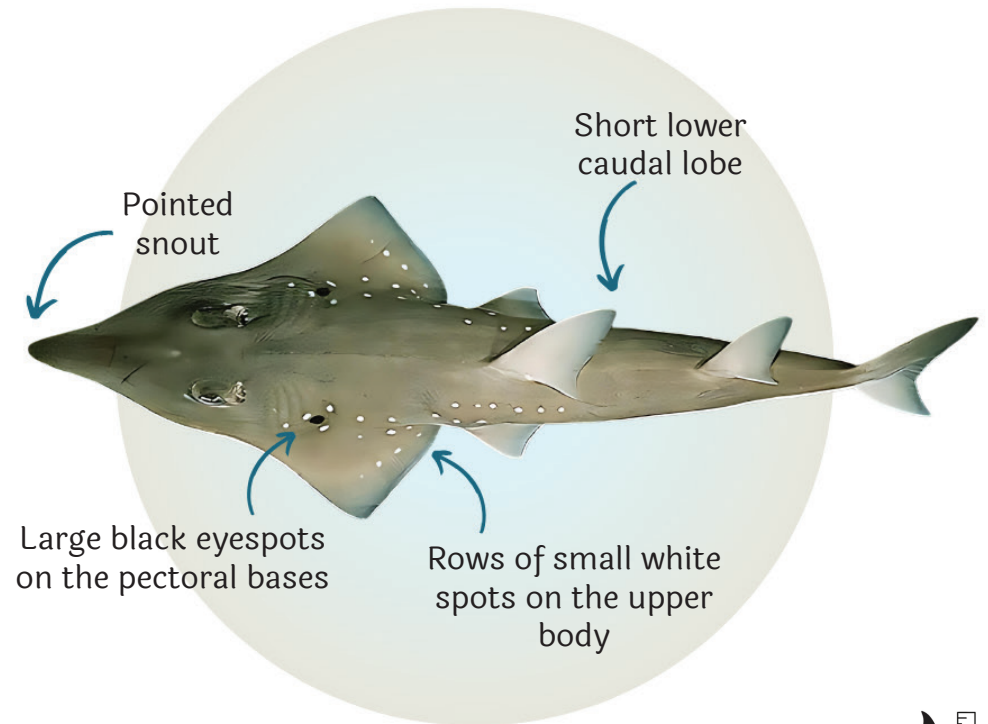
(Rhinoptera javanica)



Habitat	
Diet	
Catch	
IUCN Status	
Wild Life (Protection) Act, 1972, Status	

Whitespotted wedgefish

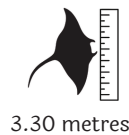
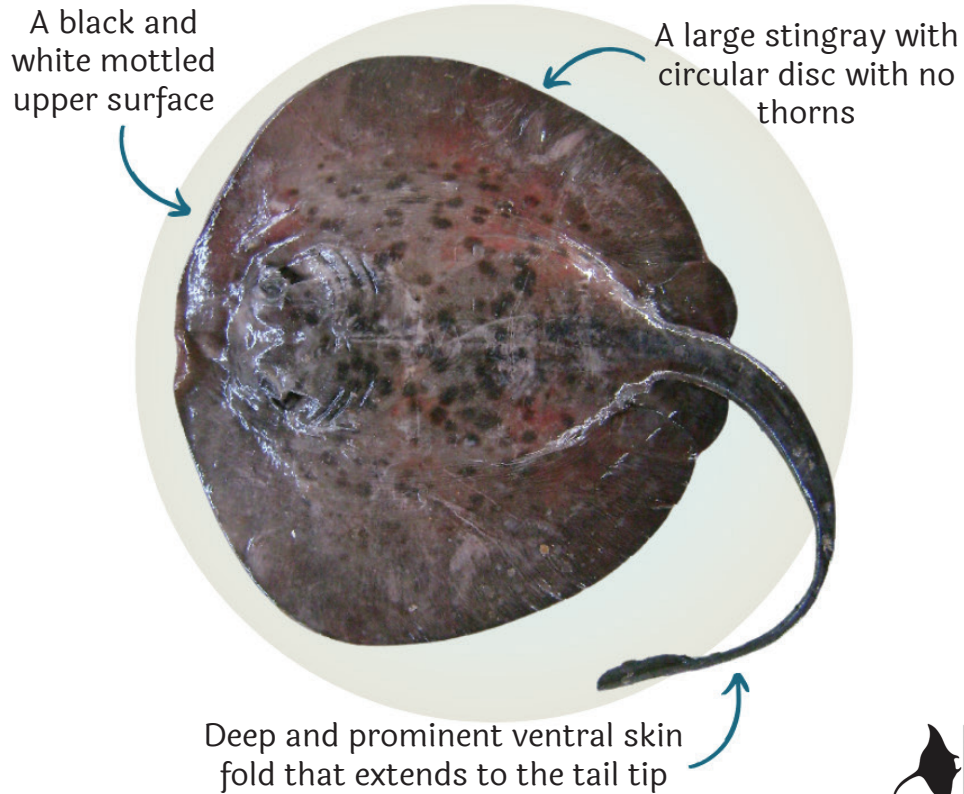
(Rhynchobatus djiddensis)



Habitat	
Diet	
Catch	
IUCN Status	
Wild Life (Protection) Act, 1972, Status	

Blotched fantail ray

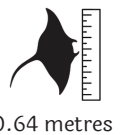
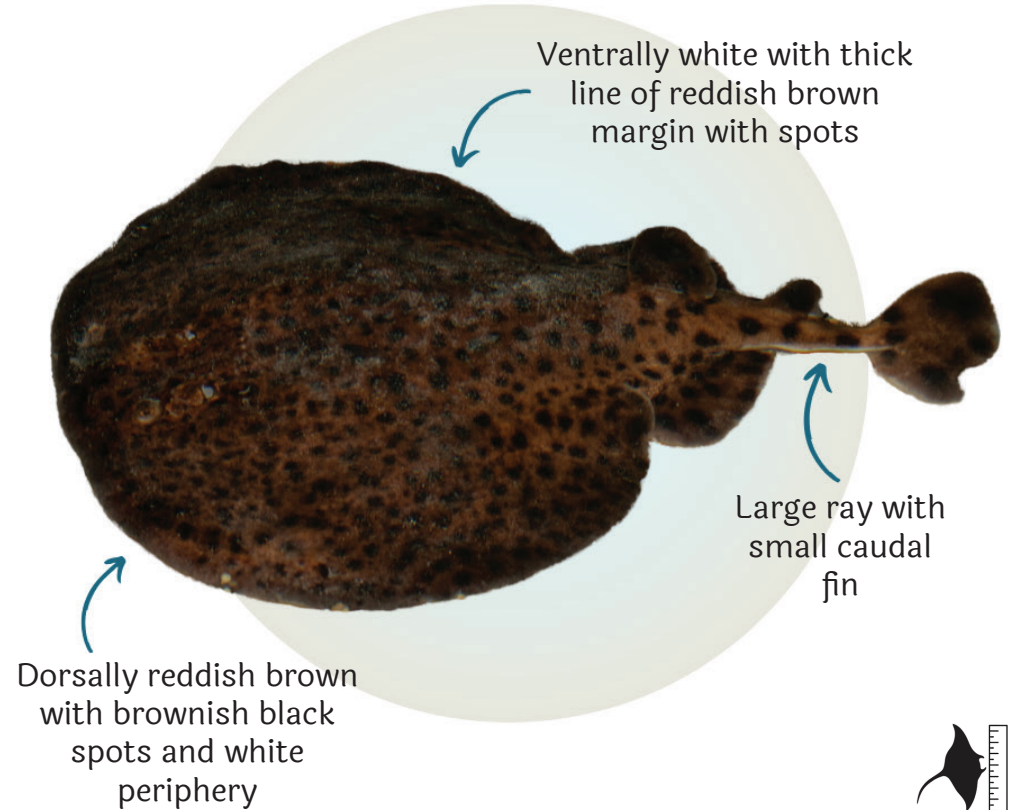
(Taeniura meyeni)



Habitat	
Diet	
Catch	
IUCN Status	
Wild Life (Protection) Act, 1972, Status	

Black-spotted torpedo ray

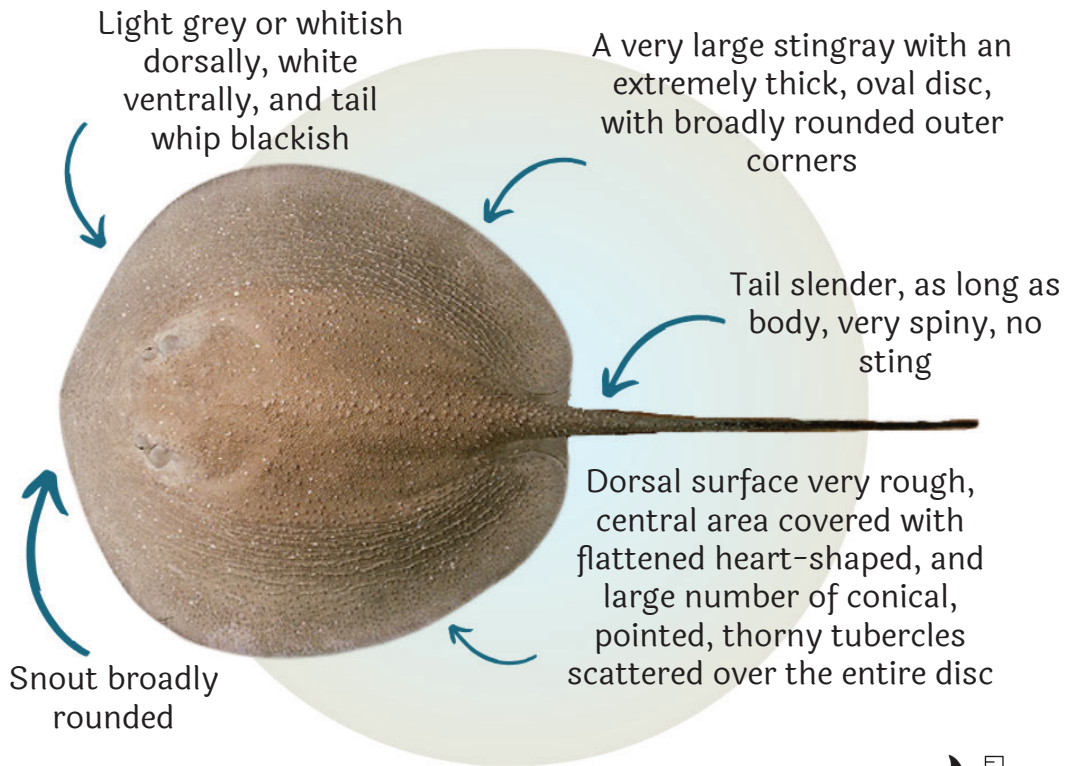
(Torpedo fuscomaculata)



Habitat	
Diet	
Catch	
IUCN Status	
Wild Life (Protection) Act, 1972, Status	

Porcupine ray

(Urogymnus asperrimus)



1.47 metres

Habitat	
Diet	
Catch	
IUCN Status	
Wild Life (Protection) Act, 1972, Status	

Image Sources

Sharks

1. Whale shark - From Canva
2. Smooth Hammerhead - Photo by Clinton used under CC-BY-NC. <https://www.inaturalist.org/observations/3664772>
3. Oceanic Whitetip Shark - Photo by Lesley Clements used under CC-BY-NC. <https://www.inaturalist.org/observations/14693399>
4. Winghead shark - Photo by Hamid Badar Osmany used under CC-BY-NC. <https://fishbase.se/photos/UploadedBy.php?autoctr=22836&win=uploaded>
5. Tiger shark - From Canva
6. Blacktail/grey reef shark - Photo by Mark Rosenstein used under CC-BY-NC. <https://www.inaturalist.org/observations/34875716>
7. Blacktip reef shark - Photo by Mark Rosenstein used under CC-BY-NC. <https://www.inaturalist.org/observations/34875716>
8. Silky shark - Photo by Etienne Guitton used under CC-BY-NC. <https://www.inaturalist.org/observations/190085818>
9. Blacktip shark - From Canva
10. Shortfin mako shark - Photo by Hamid Badar Osmany used under CC-BY-NC. <https://fishbase.se/photos/UploadedBy.php?autoctr=21830&win=uploaded>
11. Longfin mako shark - Photo by Gonzalo Mucientes Sandoval used under CC-BY-NC <https://www.inaturalist.org/observations/180375874>
12. Lemon shark - Photo by Josuè used under CC-BY-NC. <https://www.inaturalist.org/observations/176118881>
13. Sicklefin lemon shark - From Canva
14. Common Thresher shark - Photo by arapp5 used under CC-BY-NC. <https://www.inaturalist.org/observations/99462844>
15. Pelagic thresher - Photo by Susanne Spindler used under CC-BY-NC. <https://www.inaturalist.org/observations/93179603>
16. Bigeye thresher shark - Photo by Ken Graham used under CC-BY-NC. <https://www.inaturalist.org/observations/35447689>
17. Whitetip reef shark - Photo by Sylvain Le Bris used under CC-BY-NC. <https://www.inaturalist.org/observations/195009100>
18. Nurse shark - From Canva
19. Zebra shark - From Canva
20. Tawny nurse shark - From Canva
21. Hooktooth shark - Photo by Balazs Buzas used under CC-BY-NC. <https://www.inaturalist.org/observations/39398898>
22. Milk shark - Photo by Hamid Badar Osmany used under CC-BY-NC. <https://fishbase.se/photos/UploadedBy.php?autoctr=21318&win=uploaded>
23. Scalloped hammerhead Shark - Photo by Tassapon Krajangdara used under CC-BY-NC. <https://fishbase.se/photos/UploadedBy.php?autoctr=14317&win=uploaded>
24. Bramble shark - Photo by Hamid Badar Osmany used under CC-BY-NC. <https://www.fishbase.se/photos/UploadedBy.php?autoctr=18086&win=uploaded>

Image Sources

Rays

1. Black spotted torpedo – Photo by seasearch used under CC-BY-NC. <https://www.inaturalist.org/photos/320778975>.
2. Bowmouth guitarfish – Photo taken from Wikimedia and used under CC-BY-SA. <https://www.inaturalist.org/photos/194480975>.
3. Giant guitarfish – Photo by John R. Randall and used under CC-BY-NC. https://indiabiodiversity.org/files-api/api/get/raw/img/Rhynchobatus%20djiddensis/Rhdji_u2.jpg
4. Bengal whipray – Photo by Randall, J.E. and used under CC-BY-NC 4.0. <https://fishbase.se/photos/PicturesSummary.php?ID=13150&what=species>
5. Honeycomb stingray – Photo by Randall, J.E. and used under CC-BY-NC 4.0. <https://fishbase.se/photos/PicturesSummary.php?resultPage=2&ID=5507&what=species>
6. Indian ocean blue-spotted mask ray – Photo by Rajan Kumar and used under CC-BY-NC. <https://fishbase.se/photos/ThumbnailsSummary.php?ID=69054#>
7. Cowtail stingray – Photo by Randall, J.E. and used under CC-BY-NC 4.0. <https://fishbase.se/photos/PicturesSummary.php?resultPage=3&ID=8203&what=species>
8. Round ribbontail ray – Photo by H.B.Osmany and used under CC-BY-NC. <https://fishbase.se/photos/UploadedBy.php?autoctr=15501&win=uploaded>
9. Porcupine whipray – Photo by Randall, J.E. and used under CC-BY-NC. <https://fishbase.se/photos/PicturesSummary.php?ID=5400&what=species>
10. Ocellated eagle ray – Photo by Randall, J.E. and used under CC-BY-NC. <https://fishbase.mnhn.fr/photos/PicturesSummary.php?resultPage=4&ID=12600&what=species>
11. Flapnose ray – Illustration by MÜLLER, J. & HENLE, F.G.J. (1841) and used under CC-PD-Mark. https://commons.wikimedia.org/wiki/File:Rhinoptera_javanica.jpg
12. Giant manta ray – Photo by the smilingseahorse and used under CC-BY-NC. <https://www.inaturalist.org/photos/336624809>
13. Shortfin devil ray – Photo by H.B.Osmany and used under CC-BY. <https://fishbase.mnhn.fr/photos/UploadedBy.php?autoctr=19985&win=uploaded>

Shark and Ray Habitat Illustration (p.IV) by Barkhaa Avinash

References

The identifying features of each species were sourced from FishBase, a scientific database. The references used in this handbook are listed from #1 to #10 below:

1. Colman, J.G. A review of the biology and ecology of the whale shark. *J. Fish Biol.* 51, 1219-1234 (1997).
2. Compagno, L.J.V. Species Catalogue. Vol. 4. Sharks of the world. An annotated and illustrated catalogue of shark species known to date. Part 2 - Carcharhiniformes. *Fish. Synop.* 125, 251-655 (1984).
3. Compagno, L.J.V. Species Catalogue. Vol. 4. Sharks of the world. An annotated and illustrated catalogue of shark species known to date. Part 1 - Hexanchiformes to Lamniformes. *Fish. Synop.* 125, 1-249 (1984).
4. Dahl, R.B. et al. The sandy zebra shark: A new color morph of the zebra shark *Stegostoma tigrinum*, with a redescription of the species and a revision of its nomenclature. *Copeia* 107, 524-541 (2019).
5. Compagno, L.J.V., Ebert, D.A., and Smale, M.J. Guide to the sharks and rays of southern Africa. New Holland (Publ.) Ltd., London. 158 p (1989).
6. Rainboth, W.J. Fishes of the Cambodian Mekong. FAO species identification field guide for fishery purposes. FAO, Rome. 265 p (1996).
7. Pavan-Kumar, A., Kumar, R., Pitale, P., K.-N. Shen, K.-N., and Borsa, P. *Neotrygon indica* sp. nov., the Indian-Ocean blue spotted maskray (Myliobatoidei, Dasyatidae). *Comptes Rendus Biologies, Elsevier Masson.* 341(2), 120 – 130 (2018).
8. Last, P.R. and Stevens, J.D. Sharks and rays of Australia. CSIRO, Australia. 513p (1994).
9. White, W. T. Clarification of *Aetobatus ocellatus* (Kuhl, 1823) as a valid species, and a comparison with *Aetobatus narinari* (Euphrasen, 1790) (Rajiformes: Myliobatidae). CSIRO Marine and Atmospheric Research Paper. 32, 141 (2010).
10. Froese, R. and Pauly D., Editors. FishBase 2000: concepts, design and data sources. ICLARM, Los Baños, Laguna, Philippines. 344p (2000).

Species occurrences

11. Rajan, R., Rajan, P. T., Mishra, S. S., Abdul Raheem C.N., & Damodhar A.T. Fishes of Lakshadweep archipelago: new records, review, and a revised checklist. *Marine Biodiversity Records*, 14(1), 14 (2021).
12. Ramachandran, S., Ayoob, A. E., & Koya, P. P.. A new distributional record of bramble shark *Echinorhinus brucus* (Bonnaterre, 1788) from the seamount of Lakshadweep Islands with description on skeletal rings. *Journal of the Marine Biological Association of India.* 55(2), 5-11 (2014).
13. Kumar, K. A., Pravin, P., Meenakumari, B., Khanolkar, P. S., & Baiju, M. V. Shark bycatch in the experimental tuna longline fishery in Lakshadweep Sea, India. *Journal of Applied Ichthyology.* 31(2), 301-307 (2015).

